

COLLEGE COOPERATIVE SOUTHEAST



THE BRIDGE NEWSLETTER

Indiana State University,
fiscal agent & broker

Spring 2007

www.indstate.edu/ccs

Vol. 3 Issue

Community Learning Centers

Brookville - Phil Harsh
765/647-4101

Greensburg - Beth Miller /
Bev Wilson
812/663-9493

Lawrenceburg-Carol Erickson/
Judy Ostendorf / Melinda Washnock
812/537-4010 / 800/715-1058

Madison - Susie Hamner /
Carol Gammons
812/265-2580 / 800/403-2190

North Vernon-Brenda Campbell /
Patti Everroad
812/346-2091

Rushville - Mary Roller
765/932-7191

Scottsburg - Linda Terrell
812/752-4327

Shelbyville - Angie Stieneker /
Stephanie Rice
317/421-0561

Versailles - Mollie Walker
812/689-5253

Vevay - Shannon Phipps
812/427-3363

Regional Office - Greensburg
Larry Montgomery, Director
Gary Dudgeon, Technology
888/744-7777
812/663-0712

+ Regional Office
♦ Community Learning Center



College Education Matters!

Achieving a college education makes a difference! The State of Indiana competes globally primarily due to our strong manufacturing infrastructure and positive geographic location. Economic development tends to locate near an educated workforce.



Larry Montgomery, Director
College Cooperative Southeast
montgomery@indstate.edu

Within the College Cooperative Southeast Community (CCS) Learning Center region, the overall percent of jobs related to manufacturing is **above** the State of Indiana level, however, the manufacturing salaries of the CCS area as compared to the average earnings of the State of Indiana are significantly **below** in most CCS counties.

A look at the College Cooperative Southeast Community Learning Center region will reveal the significant implications of earnings, unemployment and education attainment levels as it relates to the State of Indiana statistics.

	Unemployment Rate	Per Capita Income	High School Diploma age 25 + yrs	Bachelors Degree age 25 + yrs
Indiana Avg.	5.2	\$28,838.	82.1%	19.4%
CCS Area Avg.	5.1	\$25,122.	77.8%	11.5%

The above tables indicate that individuals in Southeast Indiana have a good chance of being employed; however, the type of jobs performed would imply lower skills not requiring higher education attainment.

According to the Indiana Department of Workforce Development, in the next 5 years, 5 of the 10 occupations facing the biggest shortage of workers in Indiana are in manufacturing jobs which require a minimum of an Associate's Degree.

“Through the College Cooperative Southeast partnership meetings, the Indiana Department of Workforce Development can communicate Indiana’s strategic workplace needs as it relates to our Indiana postsecondary partners.” **Terri Schulz, Leader of Program Innovation**

“College Cooperative Southeast plays a vital role to our area, state and country, in that they make access possible for many, to receive continuing education.” **Cleo Duncan, State Representative House District 67**

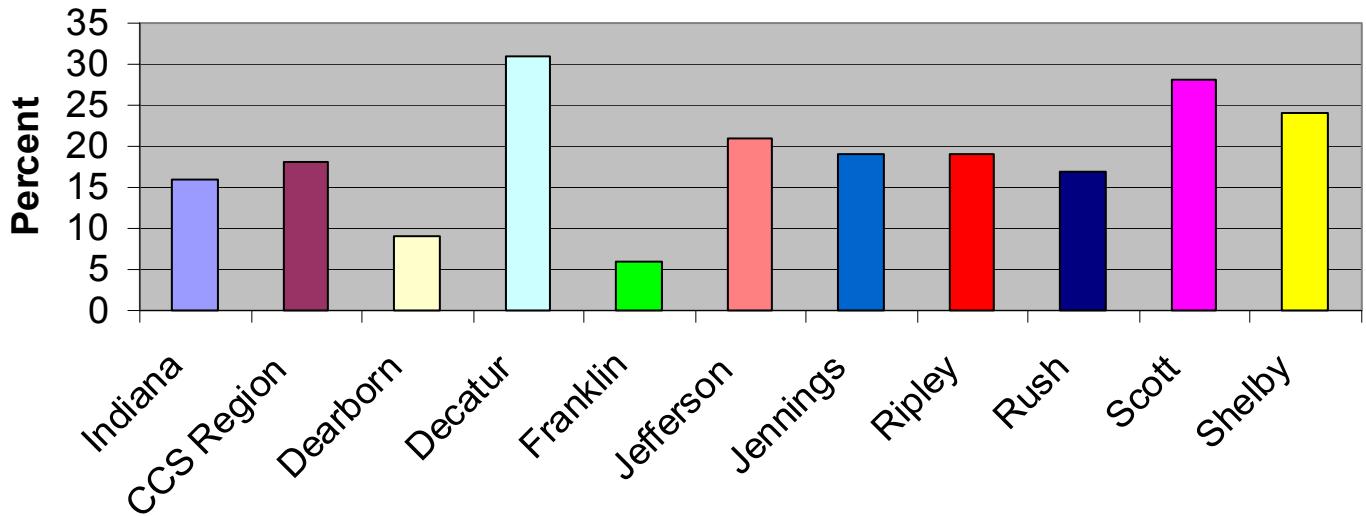
“I certainly appreciate the advantages these centers bring.”
Senator James Lewis, 45th District State Senate



distance education quotes



Table 1 Jobs Related to Manufacturing



2005 U.S. Mean Earnings by Education

Age Years	9 th Grade	High School Dropout	HS/GED	Some College	Associate Degree	Bachelor Degree	Master's Degree
25-29	\$17,442	\$20,092	\$24,870	\$28,575	\$30,665	\$40,084	\$41,601

(Continued from page 1)

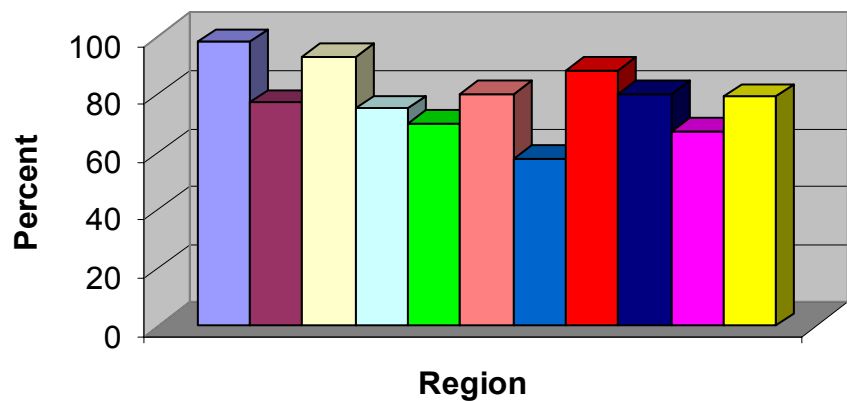
College Education Matters

A study conducted by the US Department of Commerce 2005 regarding "U.S. Mean Earnings" by education showed a dramatic increase in salaries as education levels increased.

CCS is helping individuals meet educational and occupational goals. For the Fall and Spring 2006-7 semesters, CCS assisted 2789 individuals into 4607 classes.

According to the Fall 2006 CCS Survey, 60% of the individuals CCS assists into postsecondary classes at our Community Learning Centers are 25 years and older; with 69% indicating that they desire to attain a 4 year college degree or higher.

Table 2 Average Manufacturing Earnings



- Indiana
- CCS Region
- Dearborn
- Decatur
- Franklin
- Jefferson
- Jennings
- Ripley
- Rush
- Scott
- Shelby

Distance Education Partnerships



Post-secondary education is thriving in the southeast corner of Indiana. Ivy Tech's changes are immense: a new building opened in Lawrenceburg this fall and construction is well under way for the new Madison facility.



Ivy Tech Community College - Lawrenceburg

The Lawrenceburg Riverfront building is a five story building (the first two floors are enclosed parking) nestled into the flood-wall overlooking the Ohio. Madison's building is taking shape and we can finally realize how big it will be. Add to this the gift of land in Batesville's industrial park for potential expansion there, and Ivy Tech Community College Southeast is a very busy place!

The new buildings were, of course, required by rapid growth in enrollments. Regionally, Full-Time Equivalent (FTE) has risen by 11.5% in the last

two years alone. Headcount is up nearly 7%. These numbers imply what is obvious when you walk down our hallways: we are seeing more traditional full-time college students enroll at Ivy Tech. Thus, Ivy Tech is increasingly becoming the springboard for young people to transfer to a four-year institution.

When it comes to Ivy Tech students going on to earn a bachelor's degree, or higher, we can't overlook our long partnership with the College Cooperative Southeast

The CCS continues to be a strong supporter and willing partner with Ivy Tech. It seems like a lifetime ago, when Ivy Tech vice president Kramer introduced me on a conference telephone call to Lou Jensen, from Indiana State University. That teleconference was the conception of a then radical idea: two Hoosier post-secondary institutions co-operating together!



Ivy Tech Community College - Madison

In addition to the valued partnership of

Dr. Joe Moore
ljmoore@ivytech.edu
 Dean of Academic Affairs
 Ivy Tech Community College
 Southeast Region

Indiana State, including CCS, I can't overlook the support of Ball State University from the earliest beginnings. There were many institutional disconnects to work around, including financial aid, advising, and advertising. Each institution had its own way of doing things, as well as computer systems, which couldn't "talk" to each other! I am quite certain had it not been for the sincere personal desire to cooperate to help the citizens of our region, the CCS would never have been formed. *But cooperate we did, and the College Cooperative Southeast is a thriving provider of higher education in our region.*

I still think back with awe at everything we've done and all the students we've helped with the marvelous partnership between the CCS and Ivy Tech. I continue to hold those early representatives involved in creating the CCS in highest esteem; they worked unselfishly merely to help students in the southeast corner of Indiana.



Finding interns has never been easy, until now. As a statewide resource, Indiana INTERNnet connects students and employers for internship opportunities. The **FREE** web-based system allows students to post resumes at www.indianaintern.net, while at the same time, employers are uploading internship offerings. Matches are made based on key words and emails are sent to each party indicating potential success.

Indiana INTERNnet Executive Director Pam Norman says

"While the program was originally designed to stem Indiana's brain drain, today it also operates as a tool for recruitment and low cost training as 50% of interns accept positions offered by their host companies. Partnerships with Indiana universities and employers are key to the success of this organization."



Pam Norman, Ex. Director
 Indiana INTERNnet
pnorman@indianachamber.com

A mutually successful internship begins with a clear understanding of expectations. Students armed with intern-

ship requirements communicate uni-

versity and college criteria along with personal goals during the interview process. With the right intern in place, employers can expect creative talent providing innovative solutions to business challenges.

Visit today. Whether you are an Indiana student or an employer, you'll soon be on your way to connecting with

Indiana business leaders, both present and future.

Student Spotlight



In order to earn his Bachelor's Degree in Organizational Leadership & Supervision from Purdue University in December 2006, Steve Steele attended classes at the CCS Community Learning Center in Greensburg. Employed with GECOM Corporation in Greensburg, Steve used the CCS Learning Center due to close proximity to work making it convenient to attend classes.



"When I realized what a great opportunity this was for me to earn a degree from a trusted and respected University like Purdue, I just had to go for it." It was sometimes necessary to use the Learning Centers in Columbus and Shelbyville. Adding to the convenience was the distance education option of classes offered by video-conferencing at any of the learning centers. This flexibility made it possible to earn his degree close to home and work.

"It was nice to attend the same class whether I was in Greensburg, Shelbyville, or Columbus on any given night. What makes the Learning Center so valuable is not only the convenience of proximity, but the resources available at each location, including the technology and the people. Without all three aspects, the system would not be as beneficial. As a husband, father of four active boys, and a full-time salesperson, the aspects of convenience, technology, and a helping-hand were critical to my success as a student."

"It would be irresponsible of me to not recognize those who made it possible to achieve my dream to graduate. I would have missed out on this personal accomplishment were it not for the CCS Learning Center and GECOM Corporation."

Shortly upon earning his degree, Steve was promoted to Manager of the Sales & Marketing Dept at GECOM Corporation, Greensburg.

Congratulations to:

Shannon Phipps for being nominated for the "Good for You" award by Mindy McCord. Mindy recently enrolled in on-line classes and appreciated the outstanding service she received from Shannon, CCS Learning Center Coordinator, at the Switzerland County Public Library.



Camilla Lawson, Purdue University Student Learning Center Manager received the "Dale E. Dowden Award for Outstanding Student Services in Distance Education." The award was presented last year at a statewide conference. Lawson has been involved in distance education for more than a decade



www.indstate.edu/ccs

Larry Montgomery, Director
Regional Office
422 E. Central Avenue
Greensburg, Indiana 47240

Phone: 888/744-7777 / 812/663-0712
Fax: 812/662-1951
E-mail: montgomery@indstate.edu



CCS Focus Statement:

"To provide post-secondary access to learning opportunities and services which enhance the quality of life in southeastern Indiana communities."



postage

