

▽ CAREER DIRECTIONS FOR STUDENTS
IN ARCHITECTURE, CONSTRUCTION,
AND ENGINEERING

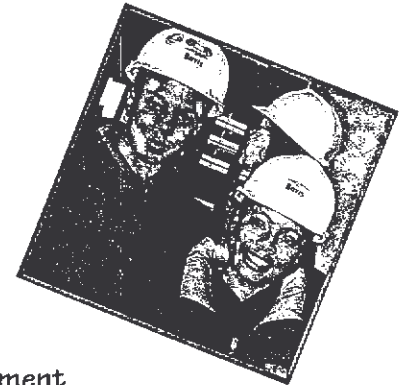
Will there be enough
**architects,
construction managers
and engineers**
to fill the industry's needs ten years from now?...



Since 1995, more than 37,000 students participated in the ACE Mentor Program. Here's why:



- ▽ Career guidance from active professionals
- ▽ Understanding of the building design and construction industry
- ▽ Understanding of the workplace
- ▽ Connections to students and professionals
- ▽ Introduction to college programs
- ▽ Behind-the-scenes access to construction sites
- ▽ Opportunity for internships and post-college employment
- ▽ Excellent training in presentation and team building skills



And these students are eligible for scholarships

ACE awards scholarships at both the local and national levels. At the national level, we provide 26 scholarships per year, totaling \$105,000 and ranging in value from \$2,500 to \$5,000. Each scholarship is given in the name of a sponsor. Since 1995, ACE has presented participating students with \$7.1 million in scholarships.

To qualify, you must be an active participant in a local affiliate's project(s) for the entire school year. You must also fill out an application, including the mentor evaluation form, and have a mentor's recommendation. To obtain an application form visit www.acementor.org

For local scholarships, see your local affiliate's web page. To find your local affiliate visit www.acementor.org

Industry leaders in workforce development ...nationwide.

By providing financial and other resources, sponsors support our programs and our growth. Most importantly, they enable us to offer our programs to students at no cost, so we can attract the best and most highly motivated talent from all levels of our society.

National and local sponsorships offer some significant benefits as well. First, they establish the sponsor as one of our industry's leaders, one whose vision encompasses not only today's challenges, but also tomorrow's possibilities.

In addition, sponsorships present opportunities to network with other industry leaders. These are chances to discuss collaborative business opportunities and share views about where the industry is going, where it ought to be going and how it ought to get there.

Finally, ACE is the construction industry's fastest-growing high school mentoring program, with 37,000 students currently participating. As a result, a sponsorship positions your organization on the cutting edge of current workforce development efforts, helping today's most promising young people gain first-hand experience of the dynamic career potential our industry offers. At the same time, sponsors get an early look at these young people and the kind of talent, intelligence and work ethic they will eventually bring to our business.

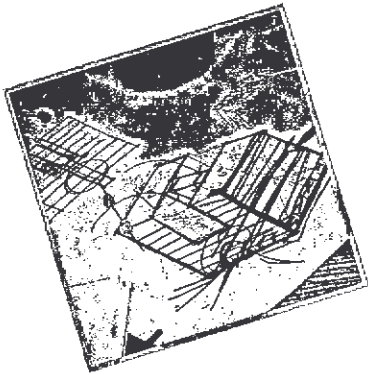
National sponsors are those companies and individuals who want to have an impact on the next generation of the workforce. Architectural, construction, engineering firms and suppliers and equipment manufacturers are key to the success of this program and make great national sponsors. If you'd like to be a national sponsor, notify our national office today by calling 203.323.0200.

In addition to national sponsorships, there are many opportunities for those who would like to become local sponsors. To find out more, contact the ACE national office.



▽ *Team projects expose students to virtually every phase of the construction process.*

Sharing professional expertise today... with the professionals of tomorrow.



ACE's programs rely upon committed, energetic mentor participation. By acting as professional role models, trusted friends and career advisors, mentors make a significant contribution to their communities, while helping to develop the professionals who will lead tomorrow's building industry. In addition, mentoring presents a variety of networking opportunities, as well as chances to sharpen individual presentation and other professional skills.

Mentors are generally members of a local community in which an ACE affiliate is located. They should also be dedicated industry participants who are passionate about what they do and want to share their enthusiasm with the workforce of the future. In addition, they must be able to establish rapport with students. While this is often easiest for young mentors, mentors of all ages have been very successful. Finally, mentors should be team players willing to dedicate up to 30 hours of their time during the school year.

Usually, mentors come from firms actively involved in some way with a local affiliate. If you are part of such an organization and want to become a mentor, talk to your company's ACE coordinator.

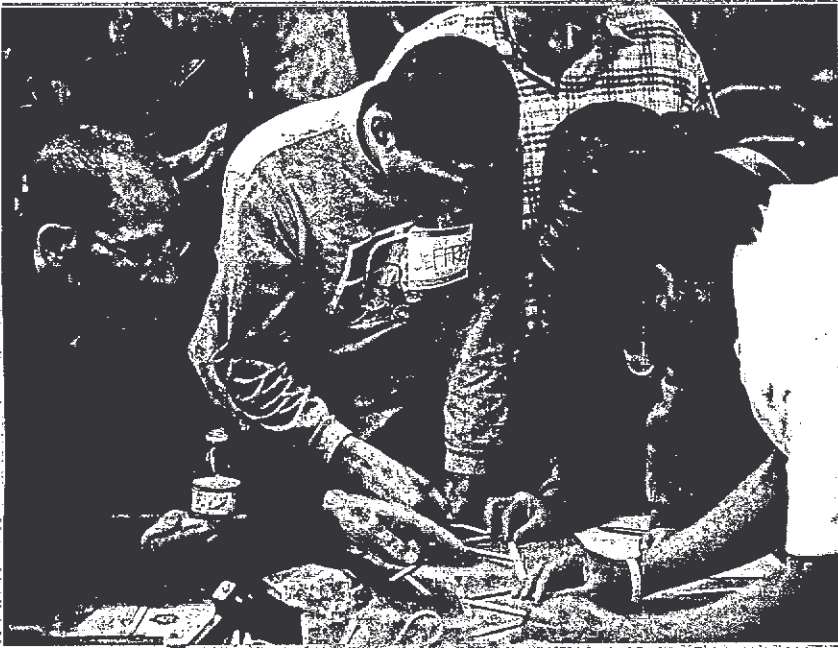
If your organization is not currently an ACE participant and you'd like to become a mentor, you should fill out an application. You will also have to undergo a background check. You should then take the completed application to your local affiliate. If there is no affiliate in your area, you can still get involved by taking your application to the affiliate nearest you.

At the same time, you can express your interest in having a local affiliate by contacting our national office by calling 203.323.0200. (Letting us know you'd like a local affiliate doesn't commit you to starting one.)

...The ACE Mentor Program of America, Inc.
is working hard to make sure there are.

The Program mission is "to engage, excite and enlighten high school students to pursue careers in the design/build construction industry through mentoring; and to support their continued advancement in the industry through scholarships and grants."

ACE is a unique partnership among industry professionals—architects, interior designers, engineers, construction managers, skill craft workers, college and university representatives, and other professionals from related corporations and professional organizations—who work together to attract young people to their professions. Industry professionals volunteer to become mentors to high school students in order to introduce them to the A/E/C professions and encourage them to pursue studies and careers in these fields. In return, the industry gets a much-needed boost of new talent.



▽ At ACE, industry professionals help students discover the challenges and rewards of building industry careers.



Mentor Program

Architecture, Construction
and Engineering



Visit us on the web at

www.acementor.org

ACE was founded by the principals of leading design and construction firms to introduce high school students to career opportunities in the industry. After several years of experimenting with various mentoring models, ACE was born in 1994 when seventeen firms banded together into 3 teams, each organized like a typical design and construction team, and "adopted" about 90 students from local high schools. Volunteers from each of the firms, serving as mentors, worked directly with the students to introduce them to the broad range of people and projects within the construction industry. Students were introduced to the various design professions and the role that each performs in planning, designing and constructing a project. Students also gained first hand insight into the design industry by touring project offices and visiting active construction sites. And students worked closely with their mentors to solve challenging "real world" projects.

ACE Mentor Program of America

400 Main Street, Suite 600

Stamford, CT 06901

T 203.323.0200

F 203.323.0032



400 Main Street, Suite 600, Stamford, CT 06901
Phone: 203 323-0020 X 107
Email: mfenelon@acementor.org
Website: www.ACEmentor.org

SCHOLARSHIP OFFER OF INTENT

_____ Yes, we will set aside a scholarship for an ACE Mentor Student who meets our entry requirements.

Name of Institution: _____

Name of Contact: _____

Title: _____

Address: _____

City: _____ State: _____ Zip: _____

Email Address: _____

Phone: _____

INFORMATION REGARDING SCHOLARSHIP

Type: Full Scholarship Tuition Only

Number of Years: _____ (providing student meets requirements)

Valued Amount: _____ per year

Please specify a course of study (and any restriction):

Print Name: _____

Signature: _____

Title: _____

Date: _____