

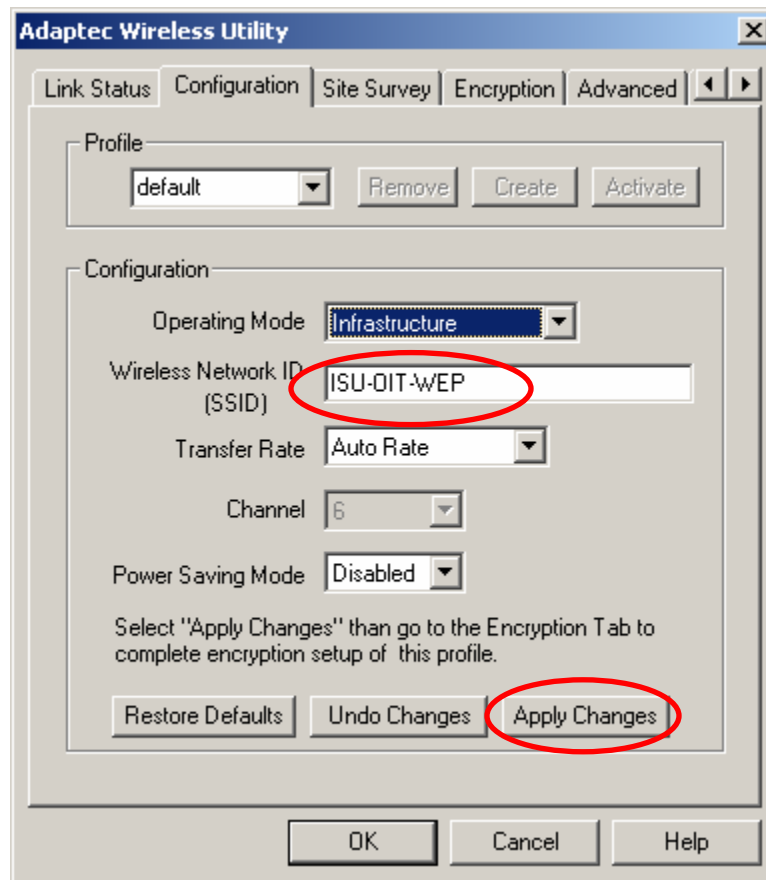
Secured access for users with:

Operating System- Microsoft Windows 2000 Professional.

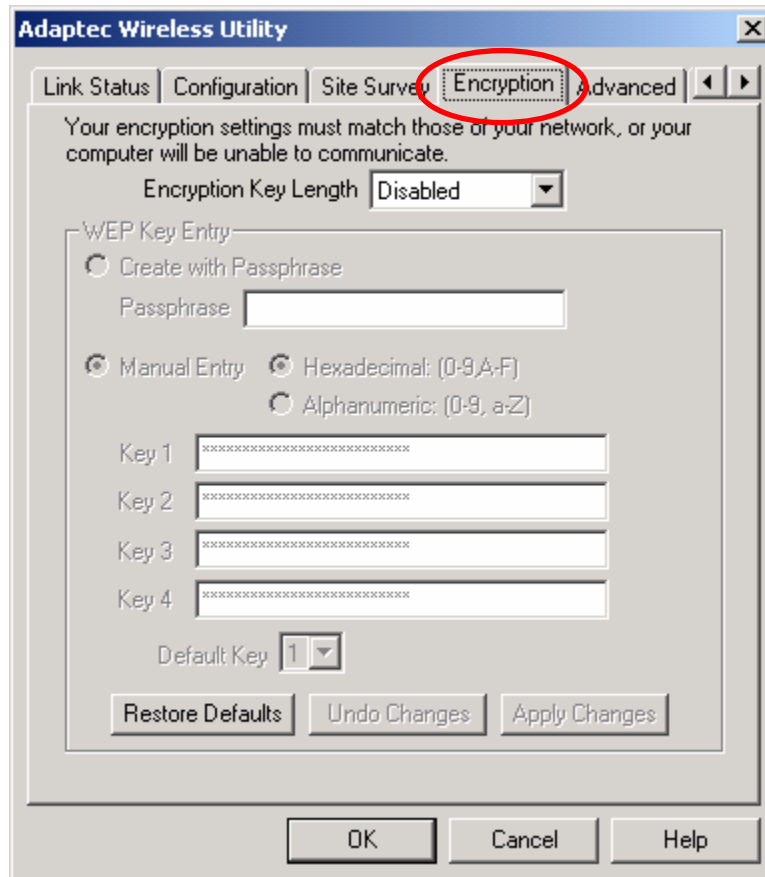
Adapter type- PCMCIA wireless adapter.

Make- Adaptec

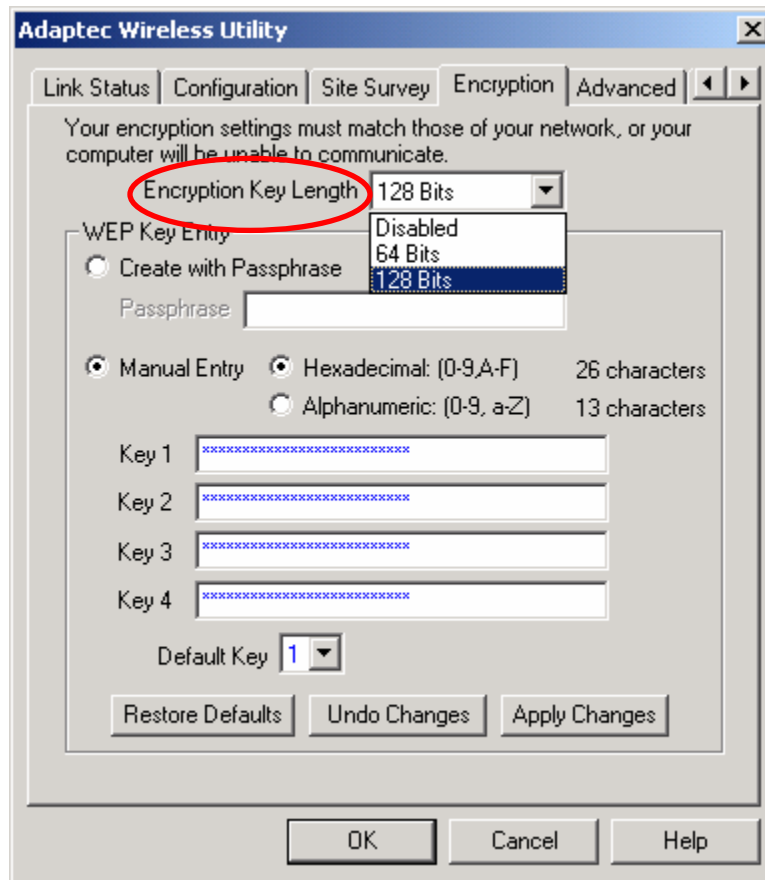
- 1). Double Click on the **wireless network icon** in the system tray, select the **Configuration tab**, type the Wireless Network ID (SSID) as **ISU-OIT-WEP** and click on the **Apply Changes** tab.



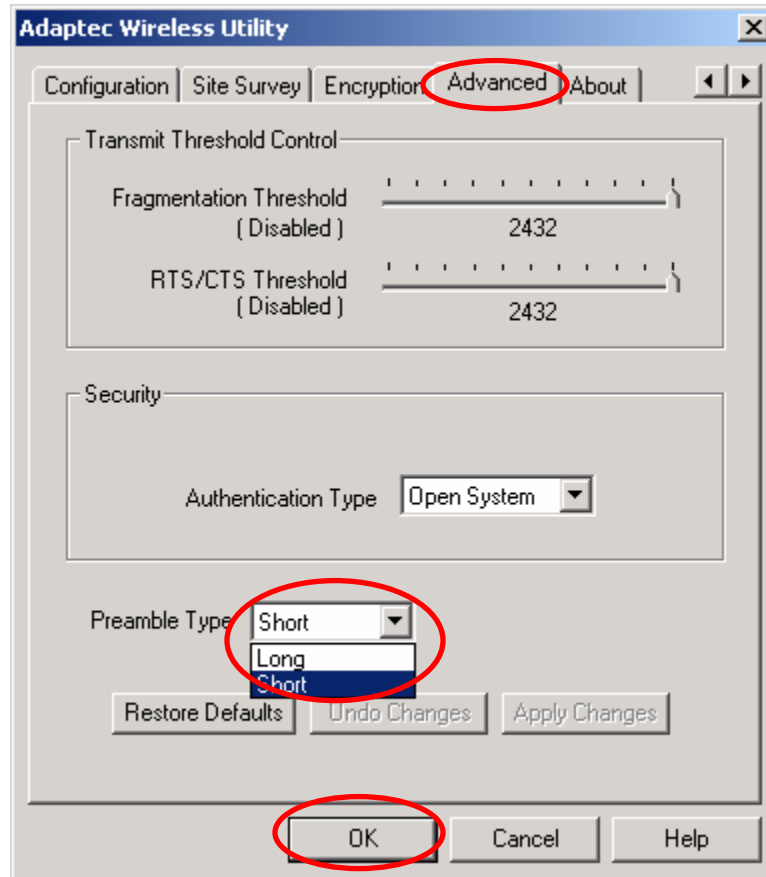
2). Click on the **Encryption** tab.



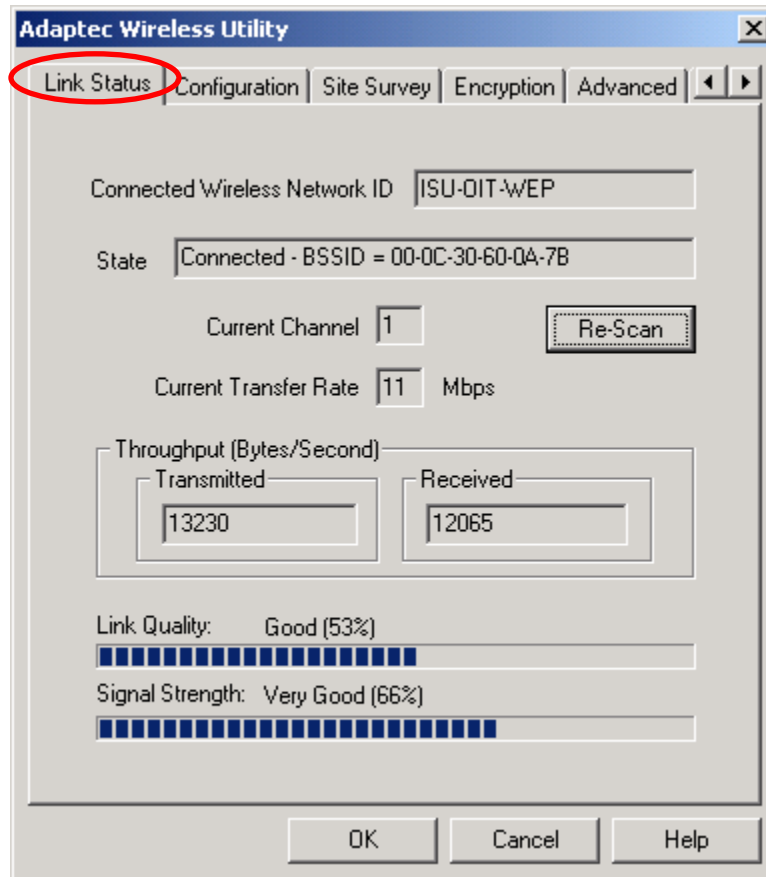
3). Select the **Encryption key length** to be **128 bit** from the drop down menu and manually type the WEP key: **81223763118122376311478092** in the provided space in the WEP **Key 1** entry dialogue box.



4). Click on the **Advanced** tab and make sure the Preamble type is set to **Short** from the drop down menu and click **OK**.



5). To see the connection status, click on the **Link Status** tab.



6). Click **OK** and continue browsing on the secured access.