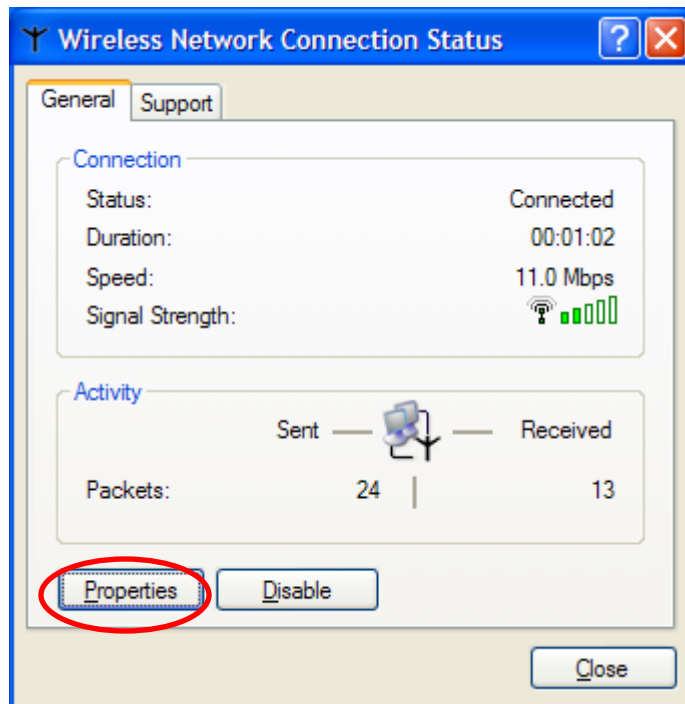


**Secured access for users with:**

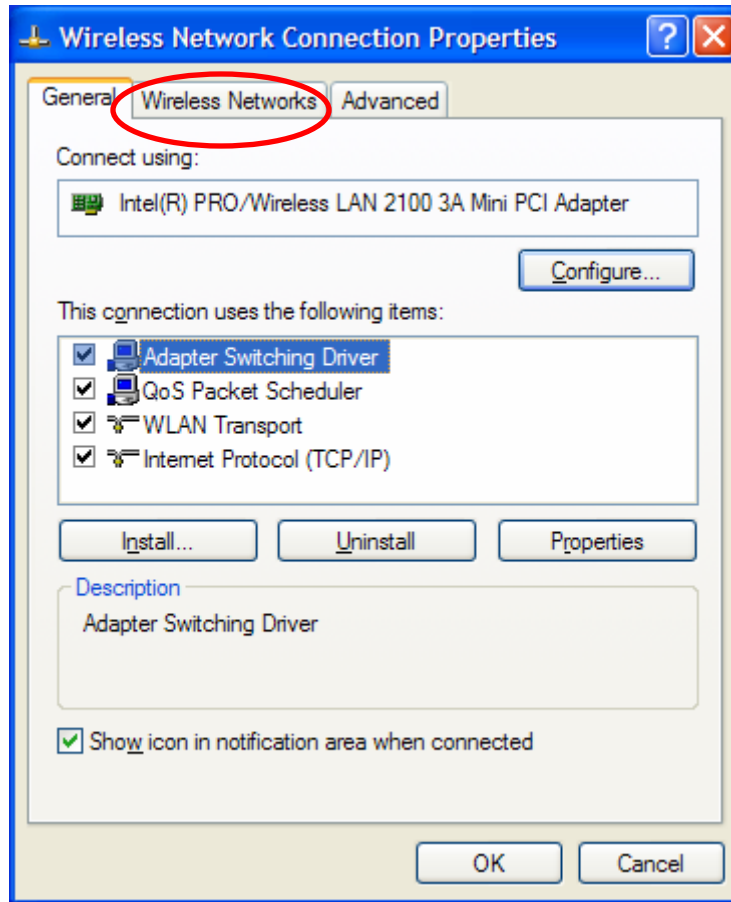
Operating System- Microsoft Windows XP

Adapter type- Integrated wireless adapter.

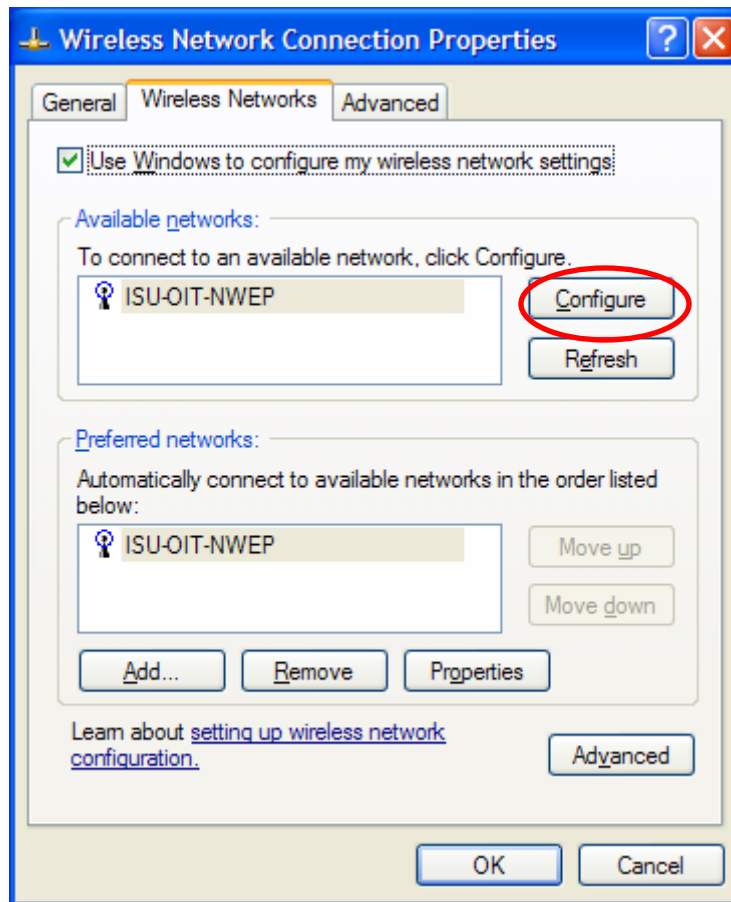
- 1). Click on the **wireless connection icon** in the system tray to open the **Wireless Network Connection Status** window and click on the **Properties** button.



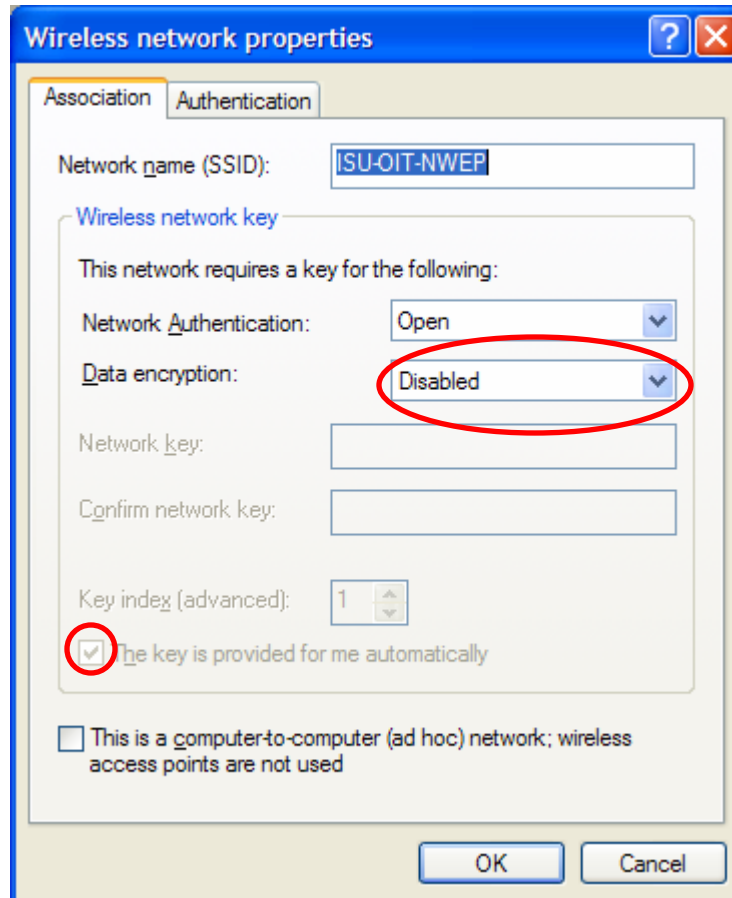
2). Click on the **Wireless Networks** tab.



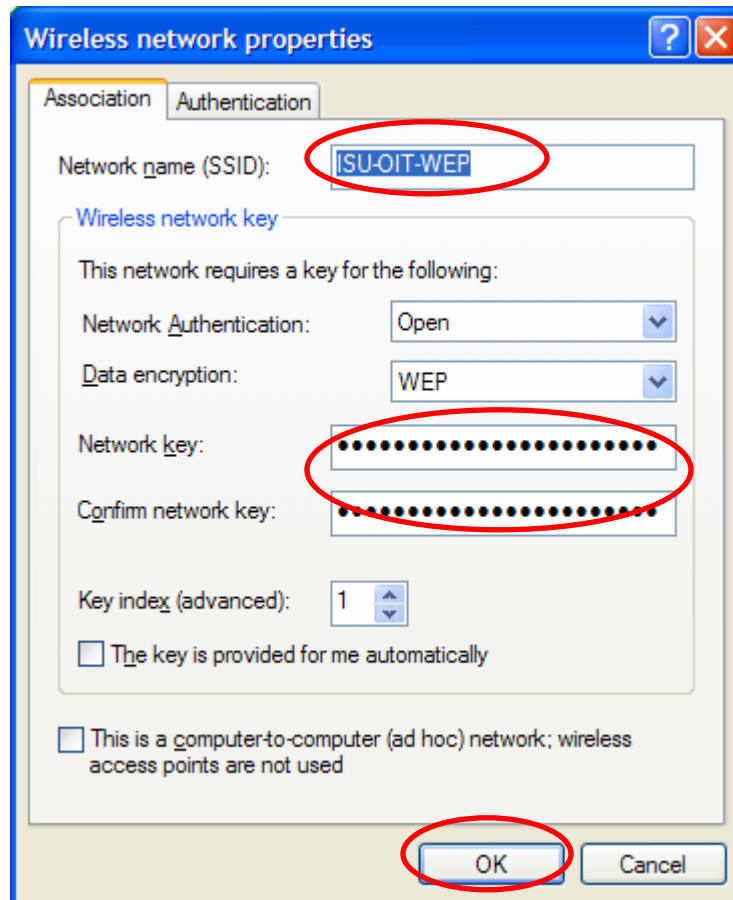
3). Click on the **C**onfigure button to configure the secured access.



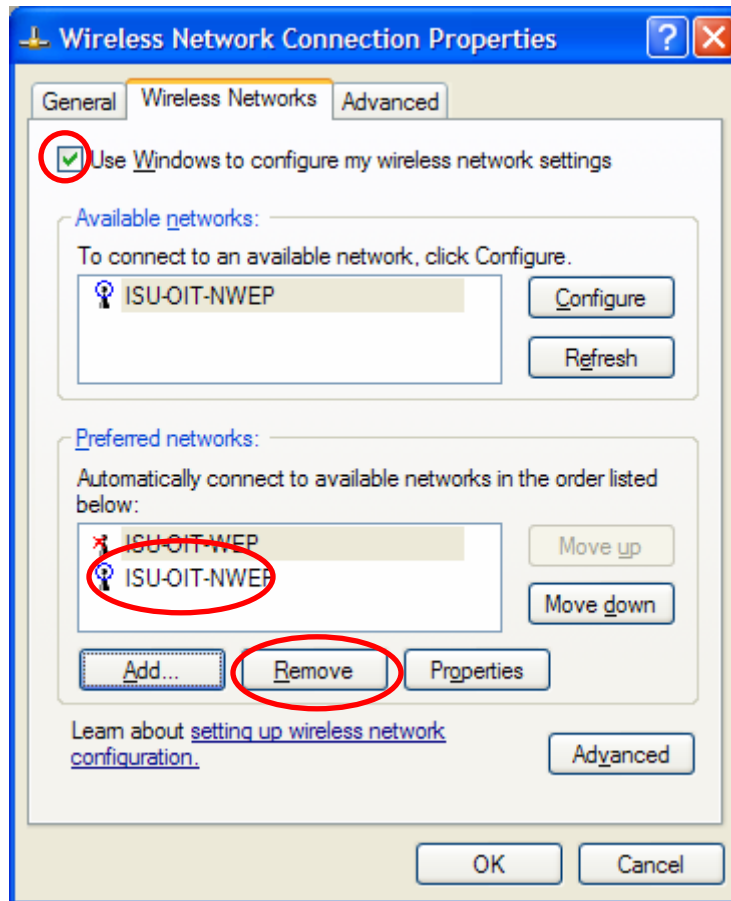
4). Change the Data encryption to WEP by selecting it from the drop down menu and **uncheck** the check box “The key is provided for me automatically”.



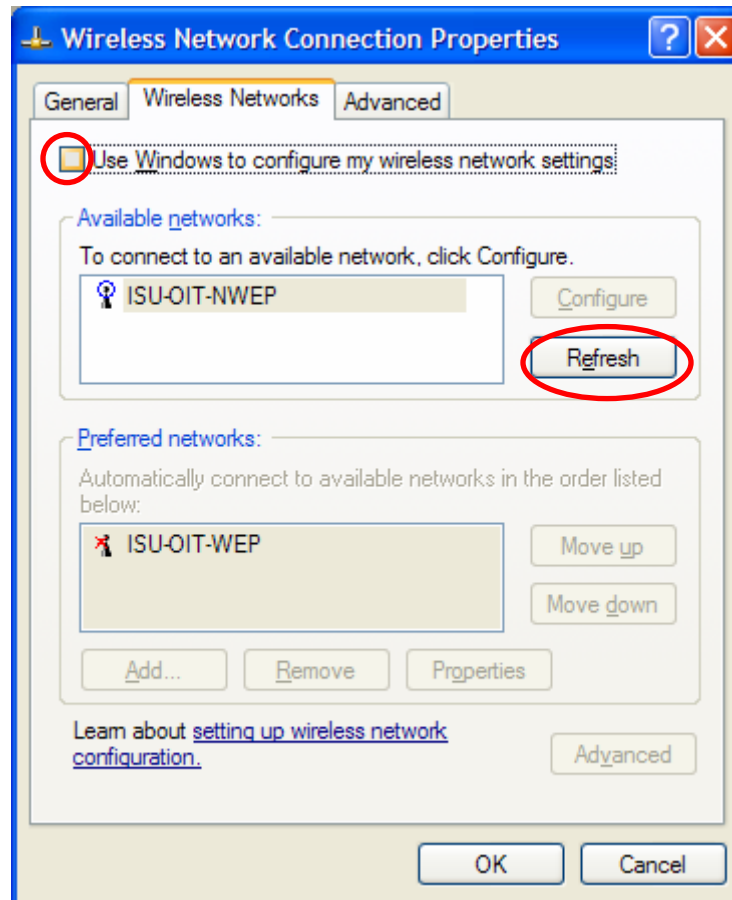
5). Type the Network name (SSID) as **ISU-OIT-WEP**, type the Network key: **81223763118122376311478092** and type it again to confirm your Network key and click the **OK** button.



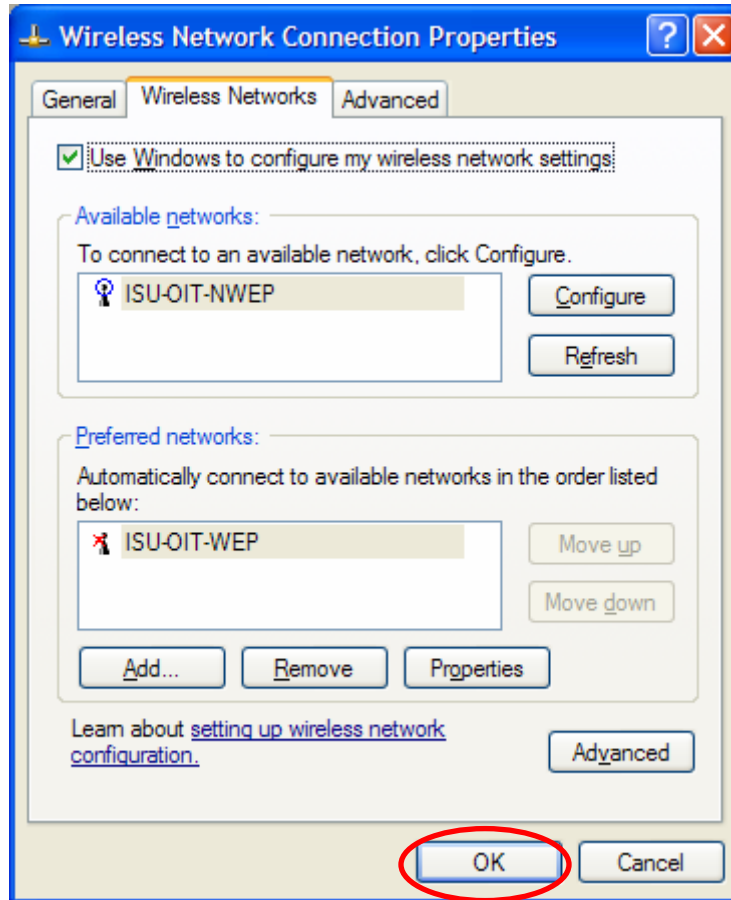
6). Highlight the **ISU-OIT-NWEP** in the preferred networks dialogue box and click on the **Remove** button to remove the NWEP connection and **uncheck** the box against “Use Windows to configure my wireless network settings”.



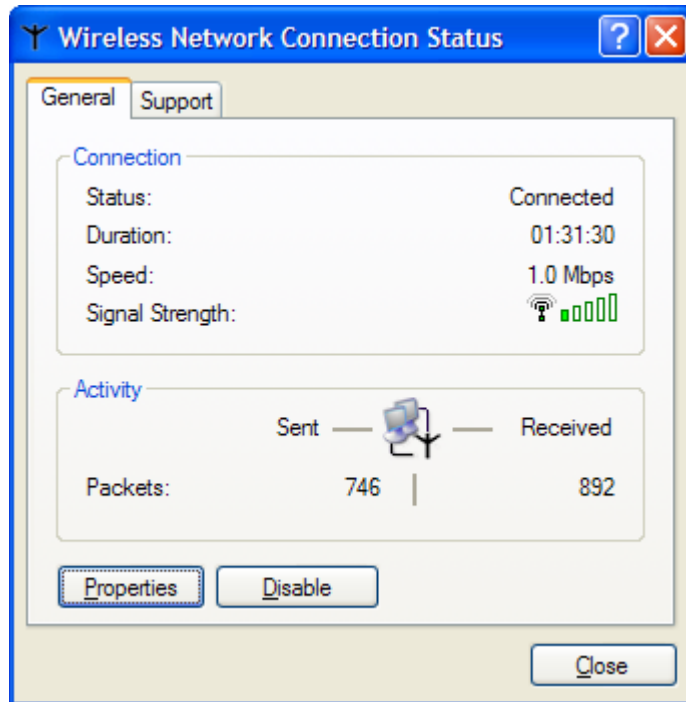
7). Click on the **Refresh** button and place a **check mark** in the box “Use Windows to configure my wireless network settings”.



8). Click the **OK** button to get secured wireless access.



9). To get information about the signal strength, double click on the **network icon** in the system tray, then click on the **Properties** button and select the **Wireless Networks** tab, you will see the signal strength that you are connected.



10). Click **OK**. Congratulations, you are ready to browse the Internet.

