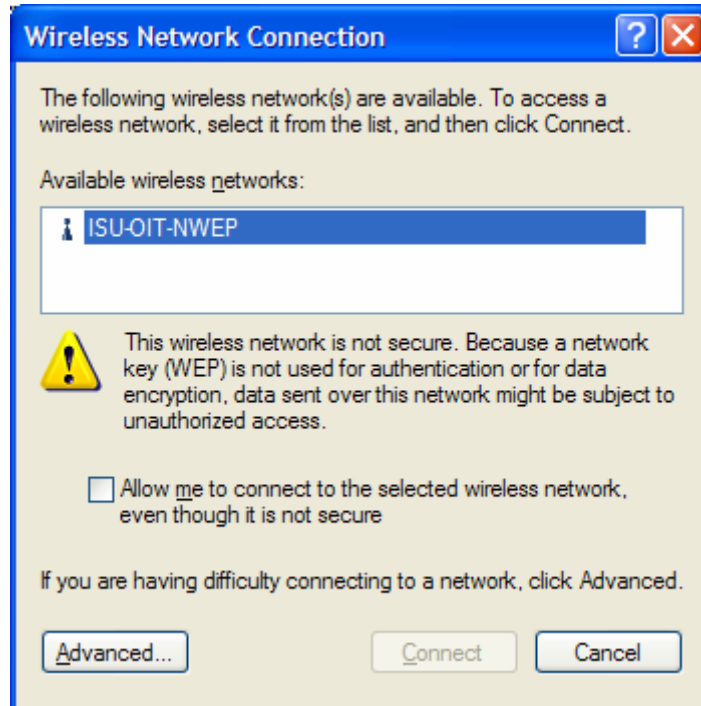
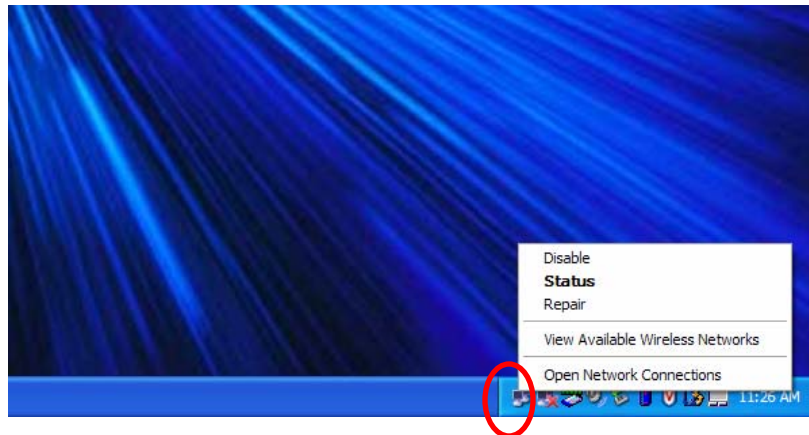


## Unsecured access for users with:

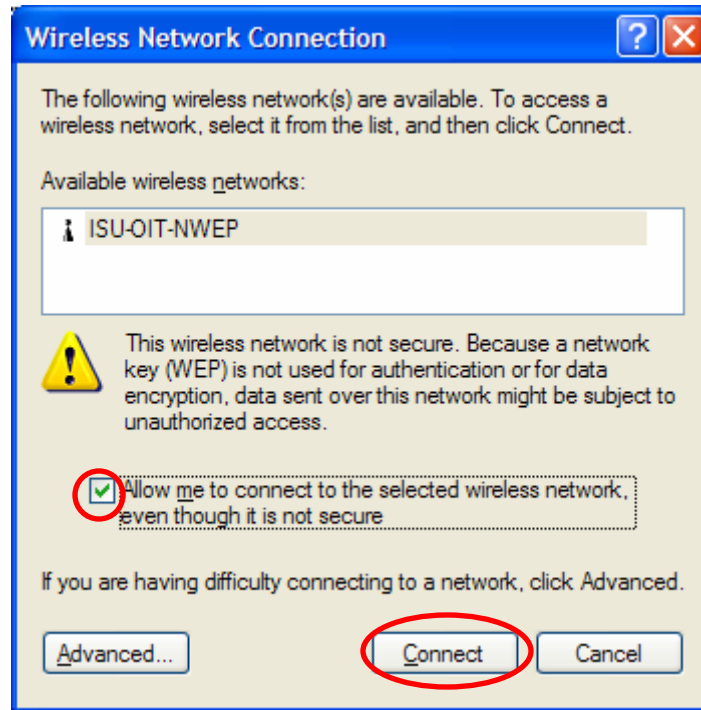
Operating System- Microsoft Windows XP

Adapter type- Integrated wireless adapter.

1). Right click on the **wireless network icon** in the system tray and select **View Available Wireless Networks** to see the following screen.



2). Place a **check mark** in the box “Allow me to connect to the selected wireless network, even though it is not secure” and click on the “**C**onnect” button.



3). To view the connection status, right mouse click on the **wireless network icon** and select **Status**. The bars lit in green show the strength of the signal for your connection.

