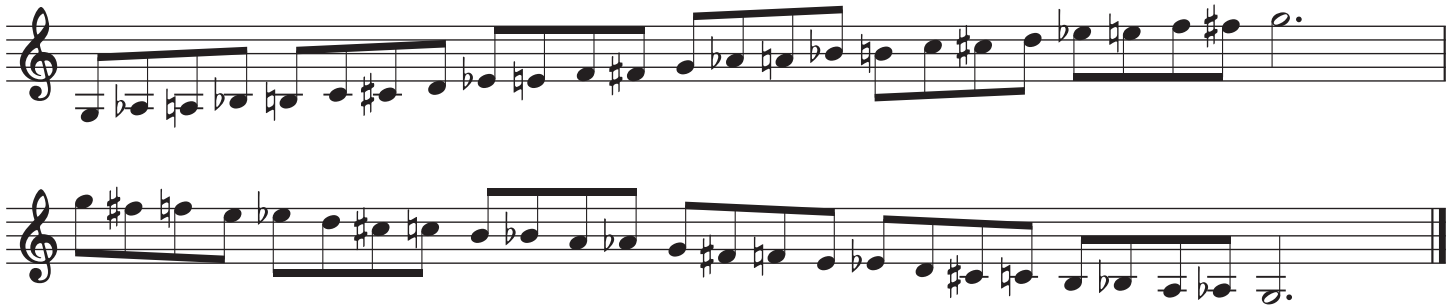




- ① **Chromatic Scale** - articulated on the way up, slurred on the way down.



- ② **Major Scales:** Play *at least* two major scales (with arpeggios) from the following choices: E-flat, A-flat, D-flat, G-natural, D-natural, E-natural, or F-natural. Scales should be two (or more) octaves, articulated on the way up, and slurred on the way down.

- ③ **Symphony No. 2, Mvmt. III "Apollo Unleashed" - Frank Ticheli**

Presto (♩ = c. 160)



- ④ **Symphony No. 2, Mvmt. III - Alexander Borodin**

Craft an *interpretation* of this excerpt that represents your most mature musicianship, including choices such as tempo, articulations, dynamics, phrasing, etc.

