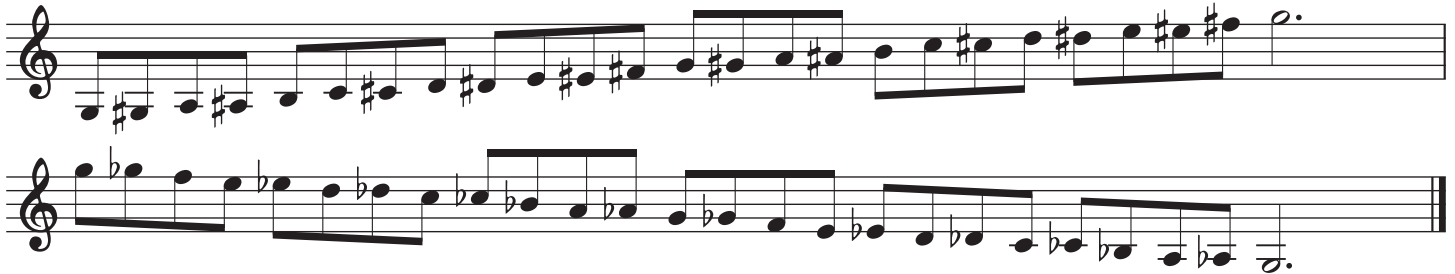




**1 Chromatic Scale** - articulated on the way up, slurred on the way down.



**2 Major and/or Minor Scales:** Play *at least* three scales with arpeggios (major or minor) from the following choices: **E-flat, A-flat, D-flat, G-flat, G-natural, D-natural, E-natural, or F-natural.** Scales should be two (or more) octaves, articulated on the way up, and slurred on the way down.

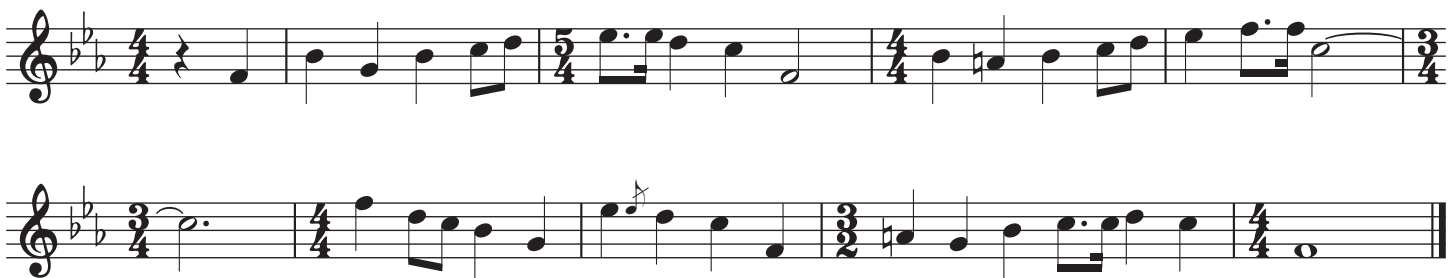
**3 Symphony in B-flat, Mvmt. I - Paul Hindemith**

Moderately fast, with vigor ( $\text{♩} = \text{c. } 88$ )



**4 Lincolnshire Posy, Mvmt. II - Percy Aldridge Grainger**

Craft an *interpretation* of this excerpt that represents your most mature musicianship, including choices such as tempo, articulations, dynamics, phrasing, etc.



5 **Commando March - Samuel Barber**

Fast March-time (♩ = c. 144)

Musical score for the first ten measures of 'Commando March' by Samuel Barber. The music is in 4/4 time with a key signature of one flat (B-flat). It begins with a dynamic marking of *ff*. The score consists of three staves of music. The first two staves contain measures 1 through 8, and the third staff contains measures 9 and 10, ending with a double bar line. A triplet of eighth notes is marked with a '3' and a bracket in measure 10.

6 **Festive Overture - Dmitri Shostakovich**

Allegretto (♩ = c. 144)

Musical score for the first ten measures of 'Festive Overture' by Dmitri Shostakovich. The music is in 2/2 time with a key signature of two flats (B-flat and E-flat). It begins with a dynamic marking of *f*. The score consists of five staves of music. The first four staves contain measures 1 through 9, and the fifth staff contains measure 10, ending with a double bar line. Dynamic markings include *ff* in measure 9 and *f* in measure 10, with hairpins indicating crescendos and decrescendos.