

TITLE OF PAPER – IF MORE THAN ONE LINE,

USE INVERTED PYRAMID FORM

A Thesis or Dissertation [add Proposal if appropriate]

Presented to

The College of Graduate and Professional Studies

Department of Your Department Name

Indiana State University

Terre Haute, Indiana

In Partial Fulfillment

of the Requirements for the Degree

Your Degree Name

by

Your Name

Graduation or Proposal Month Year

© Your Name Year [NOTE: Do NOT include copyright information on proposals]

Keywords: add five keywords here that you would use in a Web search to find this document

[NOTE: 3 spaces; titles start on 4th line]

COMMITTEE MEMBERS

Committee Chair: Name, Degree

Committee chair title (faculty rank) of Area (if applicable) or Department

Committee member institution

Committee Member: Mickey Mouse, PhD

Assistant Professor of Educational Psychology

Indiana State University

Committee Member: Donald Duck, PhD

Professor of School Psychology

Indiana State University

Committee Member: Clark Kent, PhD

Associate Professor of Curriculum, Instruction, and Media Technology

Indiana State University

TABLE OF CONTENTS

ABSTRACT.....	iii
PREFACE.....	iv
ACKNOWLEDGMENTS	v
LIST OF TABLES.....	vii
LIST OF FIGURES	viii
TITLE FOR CHAPTER 1	1
Level 1 Heading	1
Level 2 Heading	1
Level 2 Heading	1
Level 1 Heading	1
Level 2 Heading	1
Level 2 Heading	1
TITLE FOR CHAPTER 2	3
TITLE FOR CHAPTER 3	5
TITLE FOR CHAPTER 4	#
TITLE FOR CHAPTER 5	#
REFERENCES.....	9
APPENDIX A: TITLE OF APPENDIX A	10
APPENDIX B: TITLE OF APPENDIX B	11

LIST OF TABLES

Table 1. **Title for Table 1**3
Table 2. **Title for Table 2**6

[Note: You will have to reformat this list after it is generated to add a period after the table number and remove italics.]

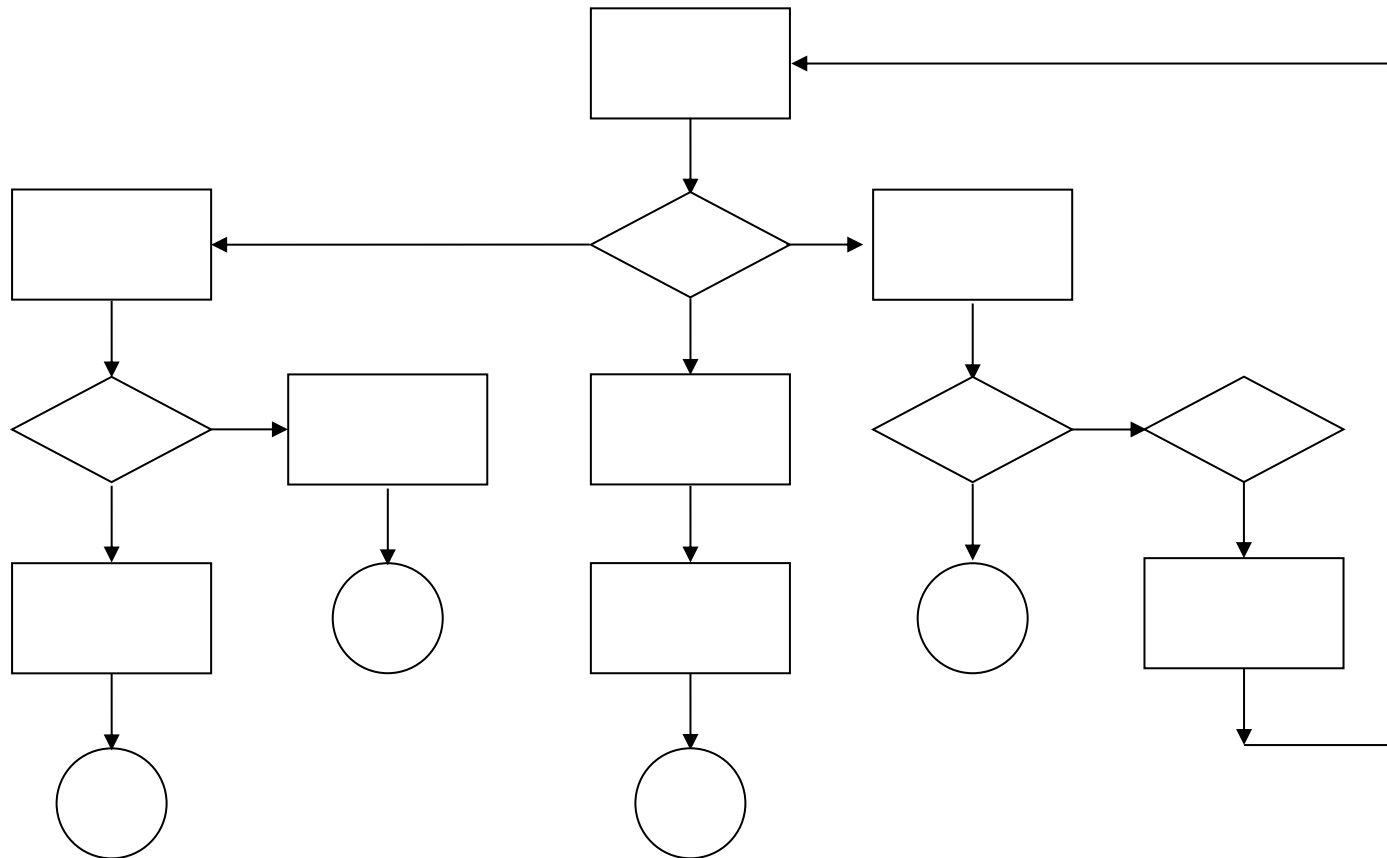
LIST OF FIGURES

Figure 1. **Title for Figure 1**.4
Figure 2. **Title for Figure 2**.8

[Note: You will have to reformat this list after it is generated to add a period after the figure number and remove italics.]

Figure 2

Title for Figure 2 in Title Case Italic not Bold



Note. Put general notes here.

^aA *specific* note explains a particular element of the figure. Double space all notes.

REFERENCES

References will be APA style.

APPENDIX A: TITLE OF APPENDIX A

Text text text text text text text text text text text text text text text text text
text text text text text text text text text text text text text text text text text text
text text text text text text text text text text text text text text.

The following information is for reference only!

APA 7 Style Headings

Level 1: Centered, Bold, Title Case Heading

Text begins as a new paragraph.

Level 2: Flush Left, Bold, Title Case Heading

Text begins as a new paragraph.

Level 3: Flush Left, Bold Italic, Title Case Heading

Text begins as a new paragraph.

Level 4: Indented, Bold, Title Case, Ending With a Period. Text begins on the same line and continues as a regular paragraph.

Level 5: Indented, Bold Italic, Title Case, Ending With a Period. Text begins on the same line and continues as a regular paragraph.

About this template

Writing a thesis or dissertation is a difficult experience without having to worry excessively about formatting. This template provides the basic front matter for a thesis or dissertation as well as a general format for the body and appendices. This template meets the minimum formatting standards for the College of Graduate and Professional Studies at Indiana State University.

Replace any material highlighted in yellow with the appropriate information. The highlighted material was shown here as a placeholder. The text not highlighted on the title page should be used as is.