

**Board of Trustees  
Schedule of Activities  
August 27, 2015**

**Thursday, August 27, 2015**

9 a.m.	Finance Committee, State Room, Tirey Hall
10 a.m.	Seminar 1: Marketing Update (John Beacon), State Room, Tirey Hall
11:00 a.m.	Break (Walk to Condit House for Lunch and Executive Session)
11:30 a.m.	Executive Session and Lunch, Condit House
12:45 p.m.	Seminar 2: Academic department activities to support and track student success (Mike Licari), State Room, Tirey Hall
1:30 p.m.	Seminar 3: Sesquicentennial Celebration (Jack Maynard/Teresa Exline), State Room, Tirey Hall
2:15 p.m.	Break
2:30 p.m.	Agenda Meeting, State Room, Tirey Hall

**Minutes**  
**Thursday, August 27, 2015, 2:30 p.m.**  
**Meeting of the Indiana State University Board of Trustees**  
**State Room, Tirey Hall, Terre Haute, Indiana**

---

**1. Agenda**

**2. Schedule**

**3. Call to Order**

**4. Remarks**

Faculty Senate Chairperson (Dr. MacDonald)  
Staff Council Chairperson (Ms. Torrence)  
Student Government Association President (Mr. Cheeks)  
President of the ISU Foundation (Mr. Carpenter)  
President of the University (Dr. Bradley)  
President of the ISU Board of Trustees (Mr. Campbell)

**5. New Business Items**

- 5a For Passage, Approval of the June 11, 2015 Meeting Minutes (Mr. Campbell)
- 5b Finance Committee Report (Mr. Taylor)
  - 5b1 For Passage, Repair and Rehabilitation Request to State Agencies (Mrs. McKee)
  - 5b2 For Passage, Additional Chilled Water Capacity (Mrs. McKee)
- 5c For Passage, Candidates for Degrees (Dr. Licari)
- 5d For Passage, Amendment to Conflict of Interest Policy 912 (Ms. Butwin)
- 5e For Acceptance, Conflict of Interest Disclosure Statements (Dr. Bradley)
- 5f For Passage, Changes to Handbook Section 230 President: Duties and Trustee Delegations of Authority (Mrs. McKee)

**6. Items for the Information of the Trustees**

- 6a University Investments
- 6b Financial Report
- 6c Purchasing Report
- 6d Vendor Report
- 6e Faculty Personnel
- 6f Other Personnel
- 6g Grants and Contracts
- 6h Agreements and Internships
- 6i Board Representation at University Events
- 6j In Memoriam

**7. Old Business**

**8. Adjournment**

**The next meeting of the Board of Trustees will take place on campus Friday, October 16, 2015.**

**Minutes**  
**Thursday, August 27, 2015, 2:30 p.m.**  
**Meeting of the Indiana State University Board of Trustees**  
**State Room, Tirey Hall, Terre Haute, Indiana**

---

### 3 Call to Order

---

### 4 Remarks

Faculty Senate Chairperson (Dr. MacDonald)  
Staff Council Chairperson (Ms. Torrence)  
Student Government Association President (Mr. Cheeks)  
President of the ISU Foundation (Mr. Carpenter)  
President of the University (Dr. Bradley)  
President of the ISU Board of Trustees (Mr. Campbell)

---

#### **REPORT OF THE FACULY SENATE CHAIRPERSON (Dr. MacDonald)**

(Dr. MacDonald submitted the following report)

Good afternoon. Welcome back to a new year!

I have always found this time of year more exciting and interesting than the new year that begins in January. I love the fresh start we all get in academia each year. There is the anticipation of cooler weather, new school supplies, and new faces. Here at ISU, it is an ever increasing number of new faces.

I attended the New Student Convocation and March through the Arch on Sunday the 16th, and it was impressive to see so many new faces. As I told the students there, I hope see each and every one of them graduate in a few years, though in the back of my head lurks the thought that our 4 year graduation rates are far lower than they should be, and that less than 25% of them will actually graduate in 4 years, unless something changes. The Faculty Senate this year is committed to working to improving student learning, retention, and graduation rates. Before long, we hope to begin reviewing the recommendations of the Advising Taskforce to that end.

The other major topic on the minds of faculty this semester is the Biennial Review, which has changed in several ways since the last go-around. The most major change is the incorporation of the Faculty Activities Database, or FAD. I have already held an Open Forum on the Biennial Review process, and know that each college will be hosting training sessions on the use of the FAD for the Biennial Review as well. In addition, the Senate Officers are putting together a FAQ and will post it on the University Faculty Blackboard site. We know there will be bumps in the system, as there are any time that a new process is instituted, but we hope to learn from them, and operate from a model of continuous improvement.

The Faculty Senate has not met since the Board meeting in June, and in fact, is having its first meeting of the year today at 3:30. So I will need to duck out to go run that meeting. Our current Vice-Chair, John Conant, is here and will stay for the rest of this meeting.

Thank you.

## **REPORT OF THE STAFF COUNCIL CHAIRPERSON (Ms. Torrence)**

(Ms. Torrence submitted the following report)

The Council has been busy this summer. The standing committees have met and have started working on their goals for the year.

At our retreat this summer we recognized the 2015 Staff Council Scholarship recipients. Four scholarships were given in the amount of \$600 each to Rhonda Beecroft, Audre Brickey, Wendy Cox and Kelsie Gallion.

The Public Relations Committee had a photo booth again at the Welcome Back picnic. I would like to thank everyone that stopped by our booth. All of the pictures can be found on the Staff Council webpage.

I would like to congratulate The Center for Community Engagement for their great work on helping ISU to be ranked number one in the country once again in civic engagement. The Staff Council will be working with their office this year to help get more staff utilizing their community service leave. A group of Staff Council representatives will be volunteering at the Let's Get Real program sponsored by Jr Achievement in late September and we hope that this will encourage others to volunteer their time.

I would like to congratulate Dr. MacDonald and Vernon on their elections to their respective groups. I look forward to working with you in the upcoming year.

## **REPORT OF THE PRESIDENT OF THE STUDENT GOVERNMENT ASSOCIATION (Mr. Cheeks)**

(Ms. Cheeks submitted the following report)

Good afternoon Members of the Board of Trustees, President Bradley, and members of the Executive Cabinet.

On behalf of the students at Indiana State University, I am truly honored to be with you this afternoon representing a proud and ever-growing student community. Indeed, it is an exciting time it is to be a Sycamore.

My name is Vernon Cheeks, and I serve ISU as the Student Government Association President. I am very appreciative of the relationship we have already formed and am truly excited to work with you for the continued betterment of our students this year. You provide direction and guidance for a strong Division and it is obvious from my interactions with your staff this fall, that they are ready for a great experience working with you.

As the semester has already switched into gear, the school year has already welcomed many celebrated moments. To highlight just a few that we are proud of as Sycamores: the three-time defending community service champions; record enrollment; our Panhellenic sorority community three-peating with the Award of Excellence; and a top #25 ranking for our football team. Indeed, it is an exciting time to be a Sycamore.

On the homefront, students are getting involved in significant ways for ISU and the community. Over 1,400 students are now members of the Forest, 100 student organizations participated in the annual Student Org Expo, and following Freshman Convocation, thousands of ISU students have participated in annual traditions including: March Through the Arch, SGA Fall Welcome Party, African American Cultural Street Fair, International Student Picnic, Rec Fest, and Residence Life's Party on the Patio. We've enjoyed the opening of the 500 Wabash residence hall complex, the re-opening of Mills Hall, and we can't wait to enter and realize the benefits of Normal Hall as the home to University College.

It's been very rewarding watching all the ISU students model the way for the new Class of 2019 as we welcome them into our shared university community.

But this semester has also had its share of concern with acts that threaten the safety and security of our students. Yes, close to our campus, there have been acts of violence and we are fortunate and blessed that no students have been hurt. But it is concerning that such acts occur so close to our college. We are fortunate to have such a dedicated Public Safety department under the leadership of Chief Newport and we know that we are in good hands. But, student safety is a top priority for us and SGA will be intimately involved this year in promoting multiple safety measures for our students. These will include the It's On Blue campaign, promoting the Rave Guardian app, advancing the #SycamoresDontHate campaign, and working with campus administrators in expanding the RAD classes.

Before I close, I would be remiss if I didn't recognize Dr. Willie Banks, our new Vice President of Student Affairs. He's only been with us for two months, but we are so fortunate to have him providing leadership for the students and his staff within the Division of Student Affairs. The SGA Vice President, Ms. Shannon Anderson, and I have had the opportunity to meet with Dr. Banks multiple times and we are excited about his passion, trust, and energy for ISU. So to the Board and President Bradley, I thank you on behalf of 13,000-plus Sycamores for inviting Dr. Banks to Indiana State University. Good choice!

So indeed it is an exciting time to be a Sycamore. Thank you again for your leadership to the university. Please know that we remain gladly committed to being a collaborator with you and working together to provide the students the Sycamore experience they deserve.

Thank you.

## **REPORT OF THE ISU FOUNDATION PRESIDENT (Mr. Carpenter)**

(Mr. Carpenter made the following comments)

### FUNDRAISING NEWS

#### **Fiscal Year 2015 Fundraising Numbers**

In FY15, the Foundation raised \$7,476,000 in support of Indiana State University. Private philanthropy is an important part of enhancing the resources for the University and opportunities for our students.

A comprehensive look at our fundraising will be published in our annual report, which will be available online in early November. The Fund has surpassed the ISU Foundation Board's \$715,000 unrestricted goal. In total, \$977,000 was raised to support the greatest needs of the University, in areas such as community engagement, experiential learning, student success, distinctive programs and other essential needs and resources for Indiana State University.

The Fund continues to be an area of focus for the Foundation and a priority giving initiative for the ISU Foundation Board. This year, our board set a goal for this annual campaign at \$750,000. It is our hope all volunteer leaders will again participate.

#### **Sycamore Athletic Fund**

The Sycamore Athletic Fund's 2015-2016 Varsity Club fundraising campaign has been kicked off with a theme of "Giving 110%". We are asking members to increase their gifts this year by 10 percent over what they gave last year. *If* every member were to participate, we would generate approximately \$100,000 in additional support for athletics.

Also, all of the Varsity Club donor benefits have been sent out based on their FY15 giving. This change was noted at the June meeting to better serve our donors who are members of the Varsity Club. We hope to see every member in Touchdown Corner for the first home football game on September 5!

Note that new members and donors who increase their Varsity Club membership level during the year will have their benefits package upgraded immediately.

### **March On! Awards – July 25, 2015**

The Foundation celebrated Indiana State University Philanthropy on July 25. The recipients of the 2015 March On! Award included:

- Bob and Bonnidell Clouse in the Faculty, Staff and Emeriti Category
- Mike and Janet Fread in the Individual Category
- Methodist Sports Medicine in the Corporation Category
- Weston Wabash Foundation in the Foundation Category
- We recognized new members of the Book and Torch and 1865 Societies for lifetime and legacy gifts to the University.
- We were also proud to present the 2015 John P. Newton Spirit of ISU award to Doug and Donna Power as they truly bleed blue in support of our University.

### FOUNDATION BOARD

At our July board meeting, several changes to the board were approved. The board approved a slate of new officers and board members for our board. Our officers serving a two-year term include: **Bart Colwell** (chairperson), **Tom Bareford** (vice-chairperson), **Jo Einstanding** (secretary), and **Gary Morris** (treasurer). Kim Smith will serve as the immediate past chair. We thank her for her service as she has been an important part in moving our organization forward, and are excited she will expand her role as a member of the Trustees.

- We will also welcome seven new members to our board at our next board meeting during the Indiana State homecoming celebration (October 15-17): **Aaron Conley, Keith Dickey, Rob Lundstrom, Rich Porter, Dan Riley, Steve Whitman, and Donna Wilson**. They bring a diverse array of skill sets and expertise to our board, and we are excited that these alumni will be joining us.
- We approved the emeriti status and sabbatical for several familiar faces.
- **Brent Beeler** and **Patty Butwin** have earned emeriti status.
- **Tony George** and **Cris Halter** will be taking short sabbaticals with the intent to rejoin as active members in the next couple of years.
- The meeting also yielded an updated strategic plan for the Foundation.

This will help us focus our work through 2019 and we anticipate our strategic plan will closely tie in with the University's next strategic plan.

### FUNDRAISING EVENTS

#### **Sesquicentennial Celebration Gala – Thursday, October 15, 2015**

The ISU Foundation is assisting the University with the fundraising efforts for the Sesquicentennial Celebration Gala. Tables and event tickets are selling quickly, so if you have not purchased yours, please do so soon. This is an event you won't want to miss! The evening will honor our University's heritage with special program and feature the grand unveiling of the Normal Hall dome and proceeds from the event will establish the Sesquicentennial Scholarship endowment, which will support need-based student scholarships. The University has deemed this a critical area for the students that we serve. Additional event information and event registration tools are available on the ISU Foundation website.

#### **New Donor Thank You Event Planned**

The Foundation is hosting our first President's Society Tailgate event on October 24 when our Sycamores take on No. 1 ranked North Dakota State at Memorial Stadium. This tailgate game will be a fun way to thank our most loyal annual supporters. The event is exclusively for President's Society level donors and we will be sending out event invitations soon.

President's Society status is achieved by making gifts of \$1,000 or more per year to Indiana State. We will be sending invitations out soon for the event.

#### [ALUMNI EVENTS](#)

We are exciting for upcoming events this fall:

#### **Summer Alumni Golf Outings**

We were pleased with the participation for the 2015 summer alumni golf outings. Our numbers were higher than in the past and we anticipate that we will continue to build on these in 2016.

#### **Football Alumni Tailgates**

The Alumni Association and Sycamore Athletic Fund will help to kick off the Sycamore football season with special pregame tailgates:

September 5 – To help open the 2015 season for the ISU vs. Butler game at Memorial Stadium. The pregame tailgate party will begin at noon and admission is \$10 per person which includes food, giveaways and cash bar.

September 12 – We will travel to West Lafayette for the first Indiana State road game vs. the Purdue Boilermakers. The tailgate will begin at 9:30 a.m. and is also \$10 and includes brunch, giveaways and cash bar.

#### **2015 Alumni Awards**

The 2015 Legacy Award will be presented in conjunction with Family Day on September 19. We are again excited to present this prestigious award to a deserving multigenerational Indiana State family, which will be announced soon.

The 2015 Distinguished Alumni Awards will be presented on October 16 during Homecoming. We have an impressive group of recipients that will be announced soon.

All alumni events are on the ISU Alumni Association website and University events calendar.

#### **REPORT OF THE UNIVERSITY PRESIDENT (Dr. Bradley)**

(Dr. Bradley submitted the following report)

President Bradley announced at the beginning of the meeting that ISU has an all-time high of enrollment of 13,584 students. The marching band played the fight song, and the cheerleaders performed.

As we saw and heard a few minutes earlier, this year is off to a great start. There are a number of things that we are celebrating as we get into the year. One of those is the great success in the last legislative session. I would like to ask Greg Goode to come up and talk about that.

Greg reported that Bob Heaton was in route and would like to report at the end of the President's report.

President Bradley asked John Beacon to give an update on enrollment.

John announced again the all-time high enrollment number of 13,584 students for Fall 2015. John asked the following individuals that helped recruit this class to stand to be recognized, Enrollment Management, Admissions, Marketing, Financial Aid and New Student Programs. John then presented a power point that covered the official fall enrollment of 13,584, 2,784 new freshman, 2,443 new freshman from Indiana, 791 transfer, 8,880 Indiana undergraduates, 2,327 graduate students, 747 international undergraduates, 310 international graduates, 334 undergraduate distance students, 784 21<sup>st</sup> Century new freshman, 1<sup>st</sup> year retention percentage of 64.2 % and reasons for growth. He then thanked the folks from the University College and Academic Affairs and asked them to take a bow for our success in keeping students enrolled.

President Bradley then asked Nancy Rogers if she would give an update on the Center for University Engagement and the latest accolades.

Nancy announced that the Washington Monthly reported that ISU is number one in the nation this year in Service Ranking. In 2011 we were number 21, in 2012 we were number 8 and in 2013 and 2014 we were number 3. We have now moved up to number one and this took everyone on campus to achieve this status. Nancy thanked and introduced her hard-working staff: Donna Isbell, Administrative Assistant; Jessica Starr, First Graduate Assistant and now Assistant Program Director; Catherine Elson, Technology; Andrea Smith, Graduate Assistant; Marty Frazier, 2<sup>nd</sup> year Graduate Assistant; Steve Stofferahn, History Professor and Service Learning Program Director; Heather Miklozek, Director of Community Engagement; Cat Paterson, Faculty Fellow from the Department of Applied Medicine and Rehabilitation. Cat Paterson has a critical role as she is responsible for the data collection for the Washington Monthly. Jessica Star organized Donaghy Day, and we had 1,789 students participate. The reason that we moved up to number one is due to improving in a subcategory. The Washington Monthly looks at number of students in ROTC, number of alumni in the Peace Corp, number of student hours of service, university support for community service and the Federal Work Study Program. What put us to the top is that the Federal Work Study Ranking jumped 100 spots and this is due to the hard work of Jeff Jacso and Chip Rogers in the Business Office and Tradara McLaurine. This goes to show that the whole campus is supportive and engaged. Thank you.

President Bradley invited Gregory Goode, Executive Director of Government Relations, to make remarks acknowledging the legislative help and support of State Representative Robert Heaton and State Senator Jon Ford. Mr. Goode reminded trustees of the historic nature of the past legislative budget-writing session which included \$101.5 million in construction funding for Indiana State University for the College of Health and Human Services building and for the Hulman Center. Mr. Goode praised the efforts of Rep. Heaton and Sen. Ford who were instrumental in advancing both projects during the legislative session. The funding represents the highest amount ever secured in the University's history. Additional acknowledgements were given for the support of Representatives Tim Brown, Alan Morrison, and Clyde Kersey as well as Senator Luke Kenley.

President Bradley concluded by mentioning that distance undergraduate student enrollment surpassed 1,000 students for the first time. He asked Ken Brauchle and staff to take a bow. He indicated that the hard work of our students, staff and faculty are making a difference in the lives of many.

### **REPORT OF THE BOARD OF TRUSTEES CHAIRPERSON (Mr. Campbell)**

(Mr. Campbell submitted the following report)

I have a couple of remarks, but I wanted you to know that this just came over the TribStar website, article headline, ISU Enrollment at all-time High. And references a contingency of marching band and cheerleaders there for the announcement.

The Board believes the enrollment and Washington Monthly results are outstanding. We know Dan, John and Nancy have done a great job, but it is everyone and the students that do the service work. Students give tours, work the welcome center and all of campus is involved. Congratulations to each and every one of you. The board is thrilled.

The trustees had a very productive 3 day retreat during which we had the President's evaluation. Dan is doing an outstanding job. The board is extremely happy with his performance and thrilled with Cheri's support, together they make campus feel like home.

The Board is also very confident in the President's Cabinet and the team he has put together, because of this the board would like to suggest that he rely on his team and focus his efforts over the next year on Student Success, Graduation Rates and Career Readiness. The President will have the full weight and support of the board. Some of the areas that will be given attention are majors completed in 6 semesters, proper sequencing for classes in majors, full credit given for general education courses, career readiness and development of a new strategic plan.



The board would also like the President to be externally focused and available to be the face of the University and spokesperson when needed.

The board is happy where the university is now and heading forward. It is a good time to be a Sycamore.

---

## 5 New Business Action Items

### 5a Approval of the Minutes of the June 11, 2015 Meeting and Executive Session

The Indiana State University Board of Trustees met in Executive Session at 12:00 p.m. on Thursday, June 11, 2015 in the State Room, Tirey Hall.

Trustees present: Mr. Baesler, Ms. Cabello, Mr. Campbell, Mr. Lowery Mr. Minas, Mr. Pease, Ms. Sluyter and Mr. Taylor.

Trustees absent: Ms. Bell

5-14-1.5-6.1 (b) (2) (B) Litigation

5-14-1.5-6.1 (b) (2) (D) Purchase or Lease of Real Property

5-14-1.5-6.1 (b) (6) Personnel

The Indiana State University Board of Trustees hereby certifies that no subject matter was discussed in the Executive Session other than the subject matter specified in the public notice.

**Recommendation:** Approval of Board Minutes of June 11, 2015 and Certification of Executive Session of June 11, 2015.

On a motion by Mr. Pease, seconded by Mr. Minas, the recommendation was approved.

---

## 5b Finance Committee Report

### 5b1 Repair and Rehabilitation Request to State Agencies

The 2015 Indiana General Assembly appropriated \$1,383,082 for Repair and Rehabilitation projects at Indiana State University for the 2015-16 fiscal year.

**Recommendation:** Approval to request the Indiana Commission for Higher Education, the State Budget Committee, the State Budget Agency, and the Governor of the State of Indiana to authorize the following projects totaling \$1,383,082 from Repair and Rehabilitation appropriation as shown below:

Mr. Taylor reported that the Finance Committee unanimously recommends the approval of the item as presented. The board voted to approve the item as presented.

## General Repair and Rehabilitation

Gillum Hall Elevator Replacement	\$100,000
Landsbaum Replacement of Heating Boilers	80,000
Dreiser Hall Replacement of Auxiliary Chiller	65,000
Grounds Maintenance Fire Alarm System Replacement	60,000
Central Chilled Water Plant Reroof	110,000
Campus Exterior Lighting	250,000
Masonry Restoration	250,000
Utility Tunnel Repairs	200,000
Elevator Minor Modernizations and Repairs	40,000
ADA Upgrades	88,082
Asbestos Abatement	50,000
Indoor Air Quality Improvements	50,000
Emergency Roof Repairs	<u>40,000</u>
	\$1,383,082

---

## 5b2 Additional Chilled Water Capacity

The Satellite Chilled Water Plant, in conjunction with the Central Chilled Water Plant, provides cooling support to various campus buildings through the campus chilled water loop. The renovation of Sycamore Towers, including the installation of air conditioning, requires additional cooling capacity to serve this complex and other campus facilities. A 2,500-ton chiller is needed to meet the projected cooling load. The estimated cost to purchase and install the chiller, cooling towers, and other related mechanical and electrical equipment is not to exceed \$3,100,000. Residence Hall and university facility reserve funds will be used to cover the cost of the project.

**Recommendation:** Authorization to proceed with the purchase and installation of a 2,500-ton chiller at a cost not to exceed \$3,100,000.

Mr. Taylor reported that the Finance Committee unanimously recommends the approval of the item as presented. The board voted to approve the item as presented.

On a motion by Mr. Pease, seconded by Mr. Campbell, the recommendation was approved.

---

## 5c Candidates for Degrees

**Recommendation:** Approval of the candidates for degrees subject to completion of the requirements.

On a motion by Mr. Pease, seconded by Mr. Taylor, the recommendation was approved.

### **Doctor of Philosophy**

Barrett Knight, Rachel  
Blake-Scontrino, Petulia  
Carter, Matthew

Fenton, Christi  
Fouts, Bonnia  
Ilikchyan, Armen  
Kolodziej, Jyoti  
Marley, Melody  
Ottway, Joseph  
Pettit, Joseph  
Robbins, Jessy  
Sipes, Shannon

**Doctor of Psychology**

Aldridge, Sarah  
Hunter, Helen  
Murphy, Stephanie  
Novi, Jonathan  
Slowik, Abigail

**Educational Specialist**

Birmingham, John  
Ennis, David  
Lucas, Dwayne  
O'Day, Cheri  
Weil, Glenn

**Master of Arts**

Brassel, Sheila  
Hammond, Rex  
Pruitt, Kyle  
Pugh, Mallory  
Swift, Matthew  
Vaughan, Jeremiah  
Wang, Xin

**Master of Business Administration**

Almutairi, Mansour  
Baker, William  
Dixon, Deandrea  
Edwards, Kristin  
Flick, Roger  
Gaunt, Adam  
Gilman, Brittney  
Gordish, Malinda  
Groeber, Andrew  
Henman, Brandon  
Hiner, Damon  
Hutchens, Christopher  
James, Adam  
Johnson, Francis  
Lawson, Kristi

McDonald, Acel  
Meyer, Carrie  
Miller, Jeff  
Nelis, Matthew  
Nguyen, Nam  
Pavlovic, Milos  
Pishgahi, Pantea  
Smiley, Jason  
Sossa, Jose  
Thompson, Hannah  
Thompson, Heather  
Wilson, Patrick  
Wingler, Maurice  
Wright, Tina

**Master of Education**

Doyle, Robert  
Kinnie, Timberly  
Wilson, Clinton

**Master of Public Administration**

Caslow, Rachael  
Chamberlain, Sion

**Master of Science**

Alabduljabbar, Abdulaziz  
Albadi, Badar  
Aldawsari, Naif  
Alharshan, Abdulmohsin  
AL-Malki, Mohammed  
Alnajdi, Amani  
Alqahtani, Alhanouf  
Alrawili, Musaad  
Alresheed, Abdulrahman  
Alrssiayes, Huda  
Alsaadi, Nouf  
Antcliff, Kaitlyn  
Arts, Coriann  
Baroom, Ahmed  
Baxter, Brandy  
Bobbba, Phani Teja  
Burris, Natalie  
Chada, Ramya  
Cherukuri, Srinivas  
Clark, Frederick  
Clowers, Maryanne  
Cooper, Susan  
Cross, Heather  
Crouch, Jason

Depuru, Rajesh  
Ding, Rong  
Dornala, Abhinay  
Dugger, Jaimee  
Fallatah, Mohammed  
Flowers, Steven  
Folzenlogen, Alexandra  
Gurrpu, Harish Sampat Malayya  
Haymond, Alyssia  
Helman, Andrea  
Hixson, Hannah  
Humphreys, Margaret  
Jeffers, Stephanie  
Johnson, Tara  
Koka, Vipin Chowdary  
Kota, Mani Sankar  
Latke, Ritika  
Messer, Courtney  
Narayana, Kiran Kumar Reddy  
Palmer, Trent  
Parsley, Emily  
Penn, Jessi  
Pipher, Emily  
Potla, Satish  
Pujari, Ashwini  
Shaw, Sunny  
Shirar, Heather  
Suwannasin, Siwat  
Vonderharr, KyLee  
Wampler, Carrie  
Watson, Derek  
Weber, Joey  
Williamson, Ashley

**Master of Social Work**

Barnett, Casandra  
Nethery, Nicole  
Wilson, Sarah

**Undergraduate Degrees**

Al Afari, Suhail Salem	Bachelor of Science	7/31/2015
Al Mansour, Abdullah Ali	Bachelor of Science	7/31/2015
Al Wazagh, Maryam	Master of Science	7/31/2015
Alamri, Ali Musharraf	Master of Science	7/31/2015
Alawjami, Hussain Hashem	Bachelor of Science	7/31/2015
Albadi, Badar Saleh	Master of Science	7/31/2015
Aldawsari, Naif Munahi	Master of Science	7/31/2015
Aldehbashi, Haitham	Master of Science	7/31/2015

Aldosari, Muhammad Fayhan	Master of Science	7/31/2015
Aldossari, Abdulhadi Rashed	Bachelor of Science	7/31/2015
Aldridge, Sarah Marie	Doctor of Psychology	7/31/2015
Alhajeri, Mubarak Saeed	Master of Science	7/31/2015
Alharshan, Abdulmohsin Fahad	Master of Science	7/31/2015
Allee, Morgan E	Bachelor of Science	7/31/2015
Al-Malki, Mohammed Adel	Master of Science	7/31/2015
Almeshari, Meshari Hamoud M	Bachelor of Science	7/31/2015
Almsarir, Abdulrahman Huwaiml	Master of Science	7/31/2015
Almubayidh, Hamoud	Master of Science	7/31/2015
Almutairi, Mansour S	Master of Business Admin.	7/31/2015
ALmuwallad, Heidar Mohammed	Master of Science	7/31/2015
Alnajdi, Amani Abdulsalam	Master of Science	7/31/2015
AlNuaimi, Ahmed	Bachelor of Science	7/31/2015
Alqahtani, Alhanouf	Master of Science	7/31/2015
Alrawili, Musaad Atallah	Master of Science	7/31/2015
Alresheed, Abdulrahman Nasser	Master of Science	7/31/2015
Alrssaiyes, Huda	Master of Science	7/31/2015
Alsaadi, Nouf Mohammed	Master of Science	7/31/2015
Alsaedi, Thamer	Bachelor of Science	7/31/2015
Alshehri, Faiz Ali	Master of Science	7/31/2015
Antcliff, Kaitlyn	Master of Science	7/31/2015
Arts, Coriann Patricia	Master of Science	7/31/2015
Baker, William Edward	Master of Business Admin.	7/31/2015
Balegana, Christine Nzigire	Bachelor of Science	7/31/2015
Baroom, Ahmed Hassan	Master of Science	7/31/2015
Barrett Knight, Rachel Michele	Doctor of Philosophy	7/31/2015
Batbold, Sosorburam	Bachelor of Science	7/31/2015
Baxter, Brandy Lynn	Master of Science	7/31/2015
Beckman, Leah Renae	Bachelor of Science	7/31/2015
Bennett, Jeremy M	Doctor of Philosophy	7/31/2015
Bennett, Staci Renee Thompson Jackson	Educational Specialist	7/31/2015
Birmingham, John Lee, Jr	Educational Specialist	7/31/2015
Blake-Scontrino, Petulia Desiree	Doctor of Philosophy	7/31/2015
Bland, Kelsie Anne	Bachelor of Science	7/31/2015
Bobba, Phani Teja	Master of Science	7/31/2015
Bobo, Meskelo Tsegaye	Bachelor of Science	7/31/2015
Boles, April Celia	Bachelor of Science	7/31/2015
Boone, Candace Ilse	Bachelor of Music Education	7/31/2015
Brassel, Sheila T	Master of Arts	7/31/2015
Budde, Justin R	Bachelor of Fine Arts	7/31/2015
Burris, Natalie Elizabeth Case	Master of Science	7/31/2015
Camble, Demetra Bernisha	Bachelor of Science	7/31/2015
Carter, Matthew Preston	Doctor of Philosophy	7/31/2015
Caslow, Rachael Ann	Master of Public Admin	7/31/2015

Chada, Ramya	Master of Science	7/31/2015
Chamberlian, Sion	Master of Public Admin	7/31/2015
Champion, Douglas Paul	Bachelor of Music Education	7/31/2015
Cherukuri, Srinivas	Master of Science	7/31/2015
Clark, Frederick Wayne, Jr	Master of Science	7/31/2015
Clowers, Maryanne Catherine	Master of Science	7/31/2015
Cooper, Susan Ann	Master of Science	7/31/2015
Cope, Rudy Alan	Master of Arts	7/31/2015
Crawford, Donna Jo	Doctor of Philosophy	7/31/2015
Cross, Heather Renee	Master of Science	7/31/2015
Crouch, Jason Shane	Master of Science	7/31/2015
Dalton, Daniel Christian David	Bachelor of Science	7/31/2015
Denney, Maddie Kay	Master of Science	7/31/2015
Depuru, Rajesh	Master of Science	7/31/2015
Ding, Rong	Master of Science	7/31/2015
Dixon, Deandrea Lenea Evans	Master of Business Admin.	7/31/2015
Dornala, Abhinay	Master of Science	7/31/2015
Doyle, Robert	Master of Education	7/31/2015
Dugger, Jaimee Patricia	Master of Science	7/31/2015
Edwards, Kristin	Master of Business Admin.	7/31/2015
Ehler, Michael Ryan	Bachelor of Science	7/31/2015
Ennis, David Robert	Educational Specialist	7/31/2015
Fallatah, Mohammed A	Master of Science	7/31/2015
Fenton, Christi Anne Winkle	Doctor of Philosophy	7/31/2015
Fields, Dora J	Master of Business Admin.	7/31/2015
Fisher, William Jeffrey	Bachelor of Arts	7/31/2015
Flick, Roger Allan	Master of Business Admin.	7/31/2015
Flowers, Steven Charles	Master of Science	7/31/2015
Folzenlogen, Alexandra M	Master of Science	7/31/2015
Fouts, Bonnia Cook	Doctor of Philosophy	7/31/2015
Gardner, Baylor D	Bachelor of Arts	7/31/2015
Gaunt, Adam Stephen	Master of Business Admin.	7/31/2015
Gilman, Brittney Morgan	Master of Business Admin.	7/31/2015
Gonzalez, Eliza	Educational Specialist	7/31/2015
Gordish, Malinda Anne	Master of Business Admin.	7/31/2015
Griggs, Brianna Antoinette	Bachelor of Arts	7/31/2015
Groeber, Andrew Philip	Master of Business Admin.	7/31/2015
Gurrpu, Harish Sampat Malayya G	Master of Science	7/31/2015
Hahn, Joni Marie	Master of Science	7/31/2015
Hammond, Rex Evan	Master of Arts	7/31/2015
Hardman, Manrich Richard	Master of Science	7/31/2015
Harper, Jeremy	Bachelor of Science	7/31/2015
Harper, Margaret Melloy	Bachelor of Science	7/31/2015
Harraf, Arezou	Doctor of Philosophy	7/31/2015
Haymond, Alyssia D	Master of Science	7/31/2015

Helman, Andrea M	Master of Science	7/31/2015
Henman, Brandon Dietrich	Master of Business Admin.	7/31/2015
Hens, Richard David, III	Master of Business Admin.	7/31/2015
Hiner, Damon Todd	Master of Business Admin.	7/31/2015
Hixson, Hannah Marie	Master of Science	7/31/2015
Humphreys, Margaret Frances	Master of Science	7/31/2015
Hunter, Helen Katrina	Doctor of Psychology	7/31/2015
Hutchens, Christopher Robert	Master of Business Admin.	7/31/2015
II Houk, Craig Allen	Bachelor of Science	7/31/2015
Ilikchyan, Armen	Doctor of Philosophy	7/31/2015
James, Adam Jason	Master of Business Admin.	7/31/2015
Janovitz, Aaron	Master of Science	7/31/2015
Jeffers, Stephanie Michelle	Master of Science	7/31/2015
Jiang, Yitong	Doctor of Philosophy	7/31/2015
Johnson, Francis Scott	Master of Business Admin.	7/31/2015
Johnson, Tara S	Master of Science	7/31/2015
Jonas, Cassandra Rebecca	Master of Science	7/31/2015
Jones, Cody Michael	Bachelor of Science	7/31/2015
Kelly, Elizabeth Ann	Master of Business Admin.	7/31/2015
Keys, Jordon Mayo	Bachelor of Science	7/31/2015
Kinnie, Timberly Dawn Bishop	Master of Education	7/31/2015
Koka, Vipin Chowdary	Master of Science	7/31/2015
Kolarik, Nicholas Anthony	Bachelor of Science	7/31/2015
Kolodziej, Jyoti	Doctor of Philosophy	7/31/2015
Kota, Mani Sankar	Master of Science	5/9/2015
Latke, Ritika Girish	Master of Science	7/31/2015
Lawson, Kristi Marie	Master of Business Admin.	7/31/2015
Lehman, Jennifer M	Master of Science	7/31/2015
Lewis, Brett A	Bachelor of Science	7/31/2015
Li, Tzuhan	Master of Science	7/31/2015
Lorenze, Joshua Adam	Bachelor of Science	7/31/2015
Lucas, Dwayne Charles	Educational Specialist	7/31/2015
Marley, Melody Estelle	Doctor of Philosophy	7/31/2015
Marsh, Amanda Renee	Bachelor of Science	7/31/2015
Mason, Dynesha Dione	Doctor of Philosophy	7/31/2015
May, Lisa Dawn	Master of Science	7/31/2015
McClellan, Erin Nicole	Master of Social Work	7/31/2015
McDonald, Acel Dean	Master of Business Admin.	7/31/2015
Messer, Courtney Jean	Master of Science	7/31/2015
Mest, Rachel R	Bachelor of Arts	7/31/2015
Meyer, Carrie Melinda	Master of Business Admin.	7/31/2015
Miller, Jeff D	Master of Business Admin.	7/31/2015
Miltz, Kathleen Therese	Educational Specialist	7/31/2015
Mundy, Kayla Marie	Bachelor of Science	7/31/2015
Murphy, Jacob Allan Stanton	Master of Public Admin	7/31/2015



Murphy, Stephanie J	Doctor of Psychology	7/31/2015
N' Cube, Cephas Bruce	Master of Science	7/31/2015
Nagel, Aaron James	Master of Public Admin	7/31/2015
Narayana, Kiran Kumar Reddy	Master of Science	7/31/2015
Nelis, Matthew David	Master of Business Admin.	7/31/2015
Nethery, Nicole Rene'a Friley Jessee	Master of Social Work	7/31/2015
Nguyen, Nam Le	Master of Business Admin.	7/31/2015
Novi, Jonathan Henry	Doctor of Psychology	7/31/2015
Oakley, Tara Lynn Brown	Master of Science	7/31/2015
O'Day, Cheri Lynn	Educational Specialist	7/31/2015
Ottway, Joseph Rudy	Doctor of Philosophy	7/31/2015
Palmer, Trent R	Master of Science	7/31/2015
Parsley, Emily Jane	Master of Science	7/31/2015
Pavlovic, Milos	Master of Business Admin.	7/31/2015
Penn, Jessi Jean	Master of Science	7/31/2015
Pettit, Joseph Lloyd	Doctor of Philosophy	7/31/2015
Pflaum, Michelle Renee	Bachelor of Science	7/31/2015
Phipps, Jennifer Marie	Bachelor of Science	7/31/2015
Pipher, Emily Jean	Master of Science	7/31/2015
Pishgahi, Pantea	Master of Business Admin.	7/31/2015
Potla, Satish	Master of Science	7/31/2015
Powell, Whitney Nathan	Bachelor of Science	7/31/2015
Price, Alexis Marie	Bachelor of Science	7/31/2015
Pruitt, Kyle Leland	Master of Arts	7/31/2015
Pugh, Mallory Elise	Master of Arts	7/31/2015
Pujari, Ashwini	Master of Science	7/31/2015
Roach, Breanna R	Bachelor of Science	7/31/2015
Robbins, Jessy Lin	Doctor of Philosophy	7/31/2015
Roberson, Tyler Adalia	Bachelor of Science	7/31/2015
Schroeder, Lauren Alise	Bachelor of Science	7/31/2015
Seals-Wheaton, Shena Donella	Bachelor of Science	7/31/2015
Shaw, Sunny Nicole	Master of Science	7/31/2015
Shirar, Heather Kaylyn Martin	Master of Science	7/31/2015
Simonson, Andrew	Master of Arts	7/31/2015
Sipes, Shannon Michel	Doctor of Philosophy	7/31/2015
Skalicky, Olivia Jean	Bachelor of Science	7/31/2015
Slowik, Abigail Kelly	Doctor of Psychology	7/31/2015
Smart, Sandra Mae	Master of Science	7/31/2015
Smiley, Jason Andrew	Master of Business Admin.	7/31/2015
Sossa, Jose Raul	Master of Business Admin.	7/31/2015
Standish, Tyler Dean	Bachelor of Science	7/31/2015
Stevens, Isiah Malichi	Bachelor of Science	7/31/2015
Suwannasin, Siwat	Master of Science	7/31/2015
Swift, Matthew Evan	Master of Arts	7/31/2015
Taormina, Rebecca Ann	Master of Science	7/31/2015

Taylor, Ronda Denice	Doctor of Philosophy	7/31/2015
Thomas, Sarah Kelsey	Doctor of Psychology	7/31/2015
Thompson, Hannah Ruth	Master of Business Admin.	7/31/2015
Thompson, Heather Michelle Walters	Master of Business Admin.	7/31/2015
Tislow, Jeffrey Carlton	Bachelor of Science	7/31/2015
Tobias, Robin Gabrial	Educational Specialist	7/31/2015
Turner, Paula Marlene	Doctor of Philosophy	7/31/2015
Upshaw, Phillip	Bachelor of Fine Arts	7/31/2015
Vaughan, Jeremiah Alexander	Master of Arts	7/31/2015
Vermillion, Floyd Bryan	Bachelor of Science	7/31/2015
Vonderharr, LyLee	Master of Science	7/31/2015
Wampler, Carrie Laine	Master of Science	7/31/2015
Wang, Xin	Master of Arts	7/31/2015
Watson, Derek Andrew	Master of Science	7/31/2015
Webb, Alison M	Bachelor of Science	7/31/2015
Weber, Joey A	Master of Science	7/31/2015
Weil, Glenn Allen	Educational Specialist	7/31/2015
Wild, David Lee	Bachelor of Science	7/31/2015
Williamson, Ashley Roselen Nicole Shield	Master of Science	7/31/2015
Wilson, Clinton Tyler	Master of Education	7/31/2015
Wilson, Eric Lee	Bachelor of Arts	7/31/2015
Wilson, Patrick Michael	Master of Business Admin.	7/31/2015
Wilson, Sarah Mary	Master of Social Work	7/31/2015
Wingler, Maurice Wade	Master of Business Admin.	7/31/2015
Wright, Tina Darlene	Master of Business Admin.	7/31/2015
Zahn, Jefferson Andrew	Bachelor of Science	7/31/2015

## 5d Amendment to Conflict of Interest Policy 912

Rationale: Policy 912 was adopted by the Board of Trustees on June 11, 2015 but contained two clerical errors. Specifically, the two sentences in Section 912.3.3 Duty to Disclose should be reversed as set forth below. Section 912.3.4 Duty to Modify should contain the notification requirement to the Dean, Associate Vice President or Vice President, the notification to the Office of Human Resources, and the development of guidelines for each division. Below are updated versions of these two sections. The full policy can be found at <http://www.indstate.edu/administration/ogc/policy-index/912>

**Recommendation:** It is the recommendation of the President that the Board of Trustees approve the update of Policy 912.

On a motion by Mr. Taylor, seconded by Mr. Minas, the recommendation was approved.

**912.3.3. Duty to Disclose.** Individuals in a familial or consensual romantic or sexual relationship prior to the existence of a supervisory or evaluative relationship or who find themselves entering into such a relationship, have a

duty to report the existence of the personal conflict of interest to the relevant department or unit head. When a personal conflict of interest exists, effective steps must be taken to ensure unbiased evaluation or supervision of the subordinate employee or student.

**912.3.4 Duty to Modify.** Upon disclosure of a personal conflict of interest, the relevant department or unit head will make appropriate modifications to supervisory or evaluative responsibilities to ensure equitable personnel or academic decision-making. Appropriate modifications may include removal of the supervisory or evaluative relationship. The department or unit head must notify the relevant Dean, Associate Vice President or Vice President of the existence of the personal conflict of interest and the modifications made. Each Vice President shall develop guidelines clarifying the process for that division. The unit or department head will also notify the Office of Human Resources.

---

## 5e Conflict of Interest Disclosure Statements

Indiana law requires public servants to disclose any financial conflicts of interest connected to contracts and purchases of the governmental entity which they serve. In compliance with this law, Indiana State asks all members of the Board of Trustees along with the president and vice presidents of the university to submit a conflict of interest disclosure statement on an annual basis and/or when these conflicts occur.

**Recommendation:** It is recommended that the Board of Trustees accept the Conflict of Interest Disclosure Statements as submitted by the Board of Trustees, university president and vice presidents.

On a motion by Ms. Bell, seconded by Mr. Taylor, the recommendation was approved.

---

## 5f Changes to Handbook Section 230 President: Duties and Trustee Delegations of Authority

### Handbook language changes:

#### 230.1.1 Functional Areas

The University is organized into the following major functional areas: Academic Affairs; ~~Business Affairs and~~ Finance and Administration; Enrollment Management, Marketing and Communications; Student Affairs; and University Engagement.

#### 230.1.3 Other Direct Reports

In addition to the vice presidents, the following also report directly to and regularly meet with the University President as the executive staff: the General Counsel and Secretary of the University; the Executive Director for Government Relations; the Chief of Staff; and the Executive Director of Strategic Initiatives.

### Additions to Delegations of Authority

#### 230.3.9 Other Fees

The Board of Trustees has authorized the President and Vice President of Finance & Administration/Treasurer to determine fees and charges for retail operations or sales and services to the public and University community.

### 230.3.9.1 Salary Tables

The Board of Trustees has authorized the President to approve salary tables for exempt and non-exempt staff based upon the budget parameters approved by the Board of

**Recommendation:** Approval of the following changes are recommended to align the handbook language with current administrative structure and titles and to expand the delegation of authority as stated above.

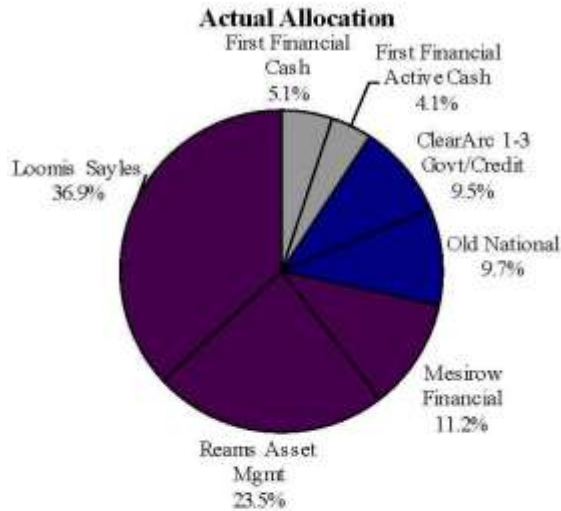
On a motion by Mr. Taylor, seconded by Mr. Minas, the recommendation was approved.

---

## 6a University Investments

In accordance with the Board of Trustees approved investment policy, the University Treasurer is responsible for management and oversight of all investments. The University Treasurer is to provide a quarterly investment performance review of all funds to the Board. Below is the quarterly report for the period ending June 30, 2015.

### Indiana State University Operating Funds Plan Summary Period Ended June 30, 2015



<u>Manager</u>	<u>Market Value</u>
ISU-First Financial Cash	\$7,554,033
ISU-First Fincl. Active Cash	\$6,090,877
ISU-ClearArc	\$14,001,830
ISU-Old National	\$14,389,358
ISU-Mesriow Fincl.	\$16,557,923
ISU-Reams Asset Mgmt.	\$34,774,970
ISU-Loomis Sayles	\$54,650,978
<b>ISU-Total Fund</b>	<b>\$148,019,969</b>

	June 30, 2015		
	Market Value	% of Total Assets	Target Allocation
<b>Tier I</b>			
First Financial Cash	\$7,554,033	5.1%	\$10mm - \$25mm
First Financial Active Cash	\$6,090,877	4.1%	
	<b>\$13,644,910</b>	<b>9.2%</b>	
<b>Tier II</b>			
ClearArc 1-3 Year Govt/Credit	\$14,001,830	9.5%	\$25mm - \$30mm
Old National Intermediate	\$14,389,358	9.7%	
	<b>\$28,391,189</b>	<b>19.2%</b>	
<b>Tier III</b>			
Mesriow Core Total Return	\$16,557,923	11.2%	Remaining Balance
Reams Asset Management Core	\$34,774,970	23.5%	
Loomis Sayles Core Plus	\$54,650,978	36.9%	
	<b>\$105,983,870</b>	<b>71.6%</b>	
	<b>\$148,019,968</b>	<b>100.0%</b>	

**QUARTERLY CHANGE IN MARKET VALUE BY INVESTMENT MANAGER  
PRIOR QUARTER ENDED JUNE 30, 2015**

	Beginning Market Value	Deposits/ Withdrawals	Investment Gain/Loss	Ending Market Value
ISU-First Financial Cash	\$7,552,212	(\$2,678)	\$4,499	\$7,554,033
ISU-First Fincl. Active Cash	\$6,084,411	(\$2,312)	\$8,777	\$6,090,877
ISU-ClearArc	\$13,988,608	(\$6,213)	\$19,436	\$14,001,830
ISU-Old National	\$14,489,359	(\$8,513)	(\$91,488)	\$14,389,358
ISU-Mesirow Fincl.	\$16,888,726	(\$15,619)	(\$315,185)	\$16,557,923
ISU-Reams Asset Mgmt.	\$35,220,628	(\$30,222)	(\$415,437)	\$34,774,970
ISU-Loomis Sayles	\$55,230,433	(\$52,435)	(\$527,020)	\$54,650,978
<b>ISU-Total Fund</b>	<b>\$149,454,377</b>	<b>(\$117,991)</b>	<b>(\$1,316,417)</b>	<b>\$148,019,969</b>

**CHANGE IN MARKET VALUE BY INVESTMENT MANAGER  
FISCAL YEAR TO DATE ENDED JUNE 30, 2015**

	Beginning Market Value	Deposits/ Withdrawals	Investment Gain/Loss	Ending Market Value
ISU-First Financial Cash	\$10,946,655	(\$3,415,943)	\$23,321	\$7,554,033
ISU-First Fincl. Active Cash	\$6,068,978	(\$9,713)	\$31,612	\$6,090,877
ISU-ClearArc	\$13,886,854	(\$24,450)	\$139,427	\$14,001,830
ISU-Old National	\$14,134,354	(\$33,474)	\$288,478	\$14,389,358
ISU-Mesirow Fincl.	\$14,881,144	\$1,441,478	\$235,301	\$16,557,923
ISU-Reams Asset Mgmt.	\$31,252,362	\$2,887,431	\$635,177	\$34,774,970
ISU-Loomis Sayles	\$50,298,083	\$4,301,228	\$51,668	\$54,650,978
<b>ISU-Total Fund</b>	<b>\$141,468,428</b>	<b>\$5,146,556</b>	<b>\$1,404,984</b>	<b>\$148,019,969</b>

## INVESTMENT MANAGER RETURNS

The table below details the rates of return for the investment managers over various time periods. Negative returns are shown in red, positive returns in black. Returns for one year or greater are annualized.

### Returns for Periods Ended June 30, 2015

Inception Date: October 1, 2010

	Last Quarter	Last Year	Last 2 Years	Last 3 Years	Since Inception	Last 5 Years
<b>ISU-Tier 1</b>	<b>0.10</b>	<b>0.45</b>	<b>0.39</b>	<b>0.39</b>	<b>0.40</b>	--
ISU-First Financial Cash	0.06	0.27	0.24	0.26	0.26	--
90 Day T-Bill	0.01	0.02	0.04	0.06	0.08	0.08
ISU-First Fincl. Active Cash	0.14	0.54	0.54	0.53	0.62	--
Citi:Treas 1 Yr	0.10	0.30	0.30	0.32	0.36	0.38
<b>ISU-Tier 2</b>	<b>(0.25)</b>	<b>1.54</b>	<b>1.91</b>	<b>1.46</b>	<b>1.83</b>	--
ISU-ClearArc	0.14	1.00	1.22	1.06	1.23	--
ClearArc:1-3 Yr G/C Comp	0.14	1.01	1.24	1.09	1.31	1.48
Barclays:Gov/Credit 1-3	0.13	0.93	1.03	0.94	1.04	1.17
ISU-Old National	(0.63)	2.04	2.57	1.84	2.43	--
Old Nat'l: Interm Comp	(0.57)	2.26	2.91	2.13	2.60	3.02
Barclays:Gov/Credit Inter	(0.62)	1.68	2.27	1.60	2.35	2.79
<b>ISU-Tier 3</b>	<b>(1.28)</b>	<b>1.44</b>	<b>3.98</b>	<b>3.40</b>	<b>4.57</b>	--
ISU-Mesirow Fincl.	(1.87)	1.46	3.29	2.21	3.28	--
Mesirow:Core Comp	(1.81)	1.72	3.41	2.25	3.39	3.82
ISU-Reams Asset Mgmt.	(1.18)	2.08	2.70	2.30	3.64	--
Reams:Core Comp	(1.01)	1.45	2.40	2.10	3.56	3.89
ISU-Loomis Sayles	(1.17)	0.03	4.52	4.17	5.37	--
Loomis:Core Plus Comp	(1.22)	0.18	4.67	4.01	5.39	6.16
Barclays:Aggregate Index	(1.68)	1.86	3.11	1.83	3.00	3.35
<b>ISU-Total Fund</b>	<b>(0.96)</b>	<b>1.38</b>	<b>3.03</b>	<b>2.62</b>	<b>3.28</b>	--
<b>Total Fund Target*</b>	<b>(1.02)</b>	<b>1.34</b>	<b>2.13</b>	<b>1.33</b>	<b>2.07</b>	<b>2.32</b>

Total Fund Target\* = 19% 90 Day T-Bill, 19% Barclays Govt/Credit 1-3 Year Index, 62% Barclays Aggregate Index

**RETURN SUMMARY**  
**PERIOD ENDED JUNE 30, 2015**

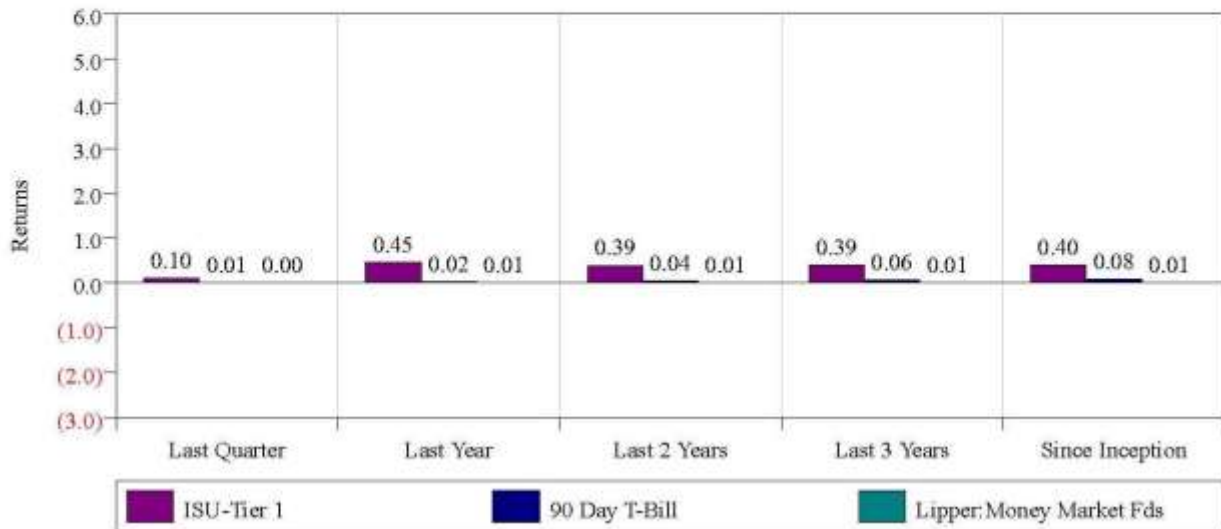
**Total Fund Performance**

The charts below show the Fund's performance by tier over various time periods versus the appropriate benchmark and peer group.

ISU Total Fund Returns  
for Various Time Periods  
Current Quarter Ending June 30, 2015  
Inception Date: October 1, 2010



ISU Tier 1 Returns  
for Various Time Periods  
Current Quarter Ending June 30, 2015  
Inception Date: October 1, 2010



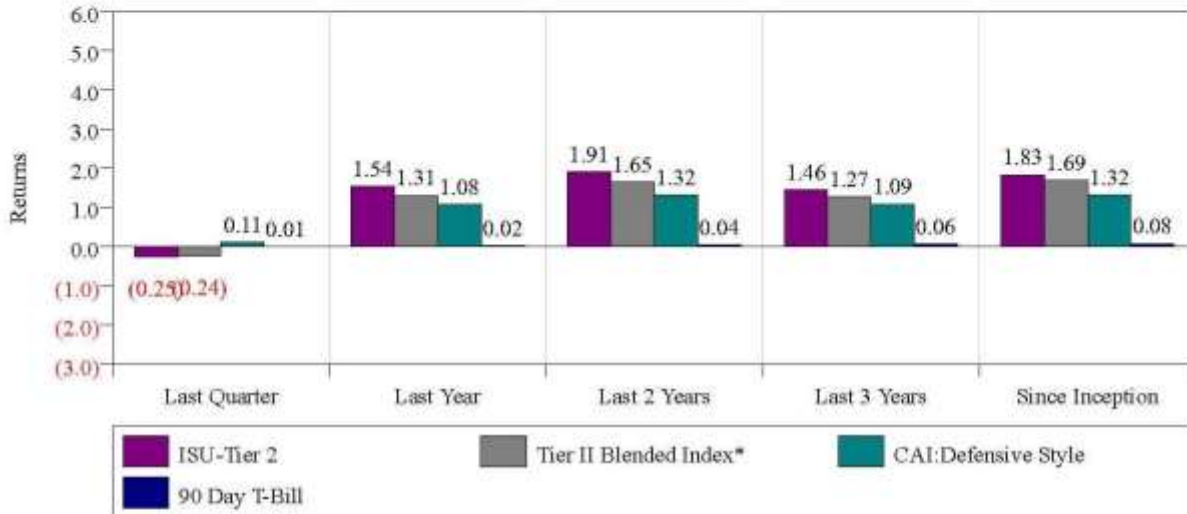


**RETURN SUMMARY**  
**PERIOD ENDED JUNE 30, 2015**

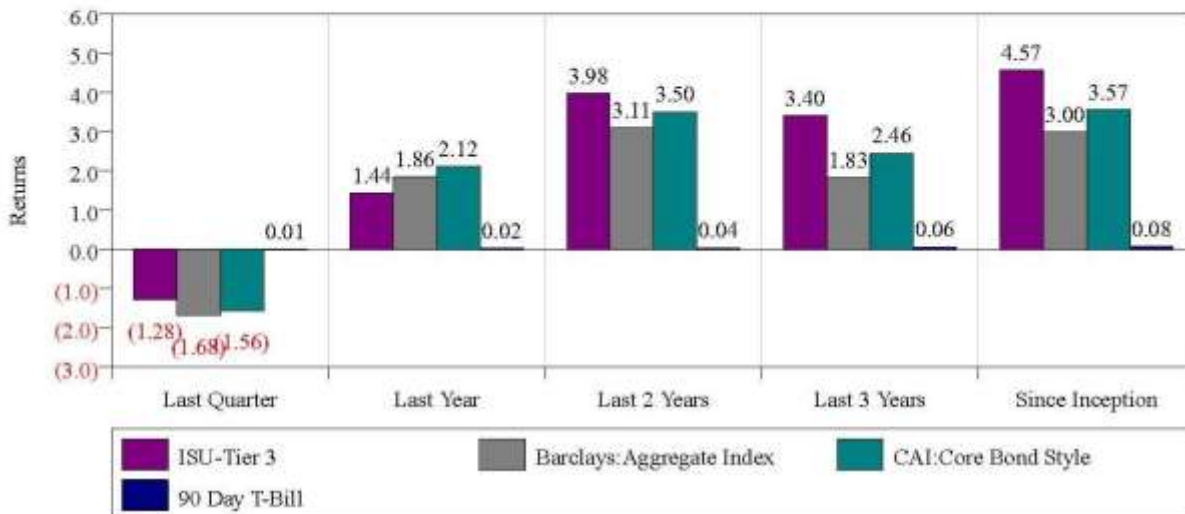
**Total Fund Performance**

The charts below show the Fund's performance by tier over various time periods versus the appropriate benchmark and peer group.

ISU Tier 2 Returns  
 for Various Time Periods  
 Current Quarter Ending June 30, 2015  
 Inception Date: October 1, 2010



ISU Tier 3 Returns  
 for Various Time Periods  
 Current Quarter Ending June 30, 2015  
 Inception Date: October 1, 2010



Tier II Blended Index\* = 50% Barclays Govt/Credit 1-3 Year Index, 50% Barclays Govt/Credit Intermediate Index

## 6b Financial Report

INDIANA STATE UNIVERSITY GENERAL FUND OPERATING REVENUE SUMMARY For the Year Ending June 30, 2015						
	2014-15 Budget	Actual through 6/30/15	Percent of Budget	2013-14 Budget	Actual through 6/30/14	Percent of Budget
<b>Revenues</b>						
State of Indiana						
Operational	\$ 67,512,231	\$ 67,512,231	100.0%	\$ 66,161,986	\$ 66,161,986	100.0%
Operational Appropriation Shortfall						
Fee Replacement	8,489,497	8,501,442	100.1%	8,496,084	8,496,084	100.0%
DegreeLink	460,245	460,245	100.0%	460,245	460,245	100.0%
Gross Student Fees	79,515,713	88,555,507	111.4%	71,823,010	85,925,157	119.6%
Other Fees and Charges	1,210,500	1,705,475	140.9%	1,212,308	1,608,144	132.7%
Sales and Services	851,785	894,532	105.0%	837,750	886,371	105.8%
Miscellaneous Income	<u>4,179,272</u>	<u>4,219,033</u>	101.0%	<u>4,020,796</u>	<u>4,059,678</u>	101.0%
Total Budgeted Revenue	\$ 162,219,243	\$ 171,848,465		\$ 153,012,179	\$ 167,597,665	
Encumbrances and Carryforward	10,597,275	10,597,275		10,708,227	10,708,227	
Reimbursements and Income Reappropriated From Other Sources	<u>10,582,295</u>	<u>10,582,295</u>		<u>10,482,674</u>	<u>10,482,674</u>	
Total Revenues	<u>\$ 183,398,813</u>	<u>\$ 193,028,035</u>	105.3%	<u>\$ 174,203,080</u>	<u>\$ 188,788,566</u>	108.4%

INDIANA STATE UNIVERSITY GENERAL FUND OPERATING EXPENSE SUMMARY For the Year Ending June 30, 2015						
	2014-15 Budget	Actual through 6/30/15*	Percent of Budget	2013-14 Budget	Actual through 6/30/14*	Percent of Budget
Salaries and Wages	\$ 80,570,071	\$ 80,282,523	99.6%	\$ 79,472,516	\$ 78,851,080	99.2%
Fringe Benefits	25,394,775	25,379,959	99.9%	25,367,508	25,210,736	99.4%
Student Wages	5,035,688	4,214,179	83.7%	4,396,689	3,725,159	84.7%
Utilities	9,974,863	9,974,863	100.0%	12,041,306	12,039,477	100.0%
Training, Representation, and Travel	2,195,692	1,753,857	79.9%	1,838,649	1,562,788	85.0%
Student Aid	15,923,790	15,577,868	97.8%	15,203,211	14,784,873	97.2%
Supplies and Expense/Transfers	41,756,823	34,810,597	83.4%	41,895,638	34,371,497	82.0%
Reserve for Operating Appropriation						
Repairs and Maintenance	6,495,142	5,982,825	92.1%	5,422,805	5,020,684	92.6%
Capital Equipment	<u>5,681,191</u>	<u>1,174,384</u>	20.7%	<u>3,150,244</u>	<u>732,582</u>	23.3%
Total Expenditures	<u>\$ 193,028,035</u>	<u>\$ 179,151,055</u>	92.8%	<u>\$ 188,788,566</u>	<u>\$ 176,298,876</u>	93.4%

\*Includes encumbrances and open commitments

## Revenues

### Operational State Appropriation

The Governor's Office announced in June of 2015 that the 2% reserve for fiscal year 2015 previously withheld would be returned to all public higher education institutions. The reserve of \$1,346,164 was recognized in June 2015 and the funds were received in July 2015.

### Student Fees

Student Fees are above the last year's amount by \$2,630,350. Summer II, Fall, and Spring tuition are above budget by \$55,582, \$6,574,580 and \$5,333,996 while Summer I was below budget by \$234,714. The University's operating budget had earlier been adjusted by \$2,568,800 to cover additional student wages, student success initiatives, unified communication project and strategic planning. The remaining income budget reversions were used to cover operating needs such as remitted fees, repairs and maintenance of buildings and grounds, and other operations, as well as strategic planning and capital improvements.

### Other Fees and Charges

Other Fees and Charges are above last year's level by \$97,331. For the year, revenues exceeded the budget by \$494,975 due to increases in strategic off campus programs and workshops, deferment fees, application fees, and collection fees.

### Sales and Services

Sales and Services finished the year at 105% of budget as transcript fees and miscellaneous reimbursements are above budget.

### Miscellaneous Income

Miscellaneous Income is above last year's amount by \$159,355. This is largely due to additional utility reimbursement from Residential Life.

## Expenses

### Salaries and Wages

Salaries and wages are above last year's level by \$1,431,443 inclusive of a November 1, 2014 increase in salaries of 2.5%. Support salaries, administrative salaries, retiree buyouts, and overtime grew for the year.

### Fringe Benefits

Fringe benefits shows a modest increase of \$169,223. Medical insurance, TIAA/CREF, PERF, and FICA expense grew for the year. This was offset by lowered retiree medical insurance as the VEBA had been used during the whole fiscal year.

### Student Wages

Student wages shows an increase of \$489,020. An additional \$568,800 was added to student wage budgets to hire new students and maintain levels of employment. The remaining budget of \$821,509 will carry forward into 2016.

### Utilities

Utilities expenses declined by \$2,064,614 due to reductions in natural gas of \$1,967,439 and electricity of \$168,431, while sewage increased by \$79,512.

### Training, Representation and Travel

Training, Representation, and Travel used 79% of their budget. The remaining \$441,835 positive reversion will be carried forward into the new fiscal year and will be used to supplement the 2015-16 base budget.

### Student Aid

Student Institutional Aid grew by \$792,995 for the year. Reversion of \$345,922 includes \$250,000 in graduate assistantships to be used for 2015 summer awards and \$92,526 for laptop scholarships.

### Supplies and Expense/Transfers

Supplies and Expense/Transfers increased by \$439,100. \$17,054,675 of total Supplies and Expenses are transfers which includes lab fees, capital improvements, strategic initiatives, budgeted transfers, and Unbounded Possibilities programs.

### Repairs and Maintenance

Repairs and Maintenance show that expenses are above last year's amount by \$962,141 which represents a full year of budget realignment within OIT.

### Capital Equipment

Capital equipment had an increase of \$441,802 from fiscal year 2014. A total of \$4,506,807 will carry forward into fiscal 2016 which includes the University's reserve for capital improvements. Many departments utilize a multiple-year planning approach for the purchase of capital equipment utilizing carry forward dollars.

---

## 6c Purchasing Report

Purchase Order Activity for Period May 21, 2015 to August 11, 2015			
<b>Purchases Over \$50,000</b>			
<b>Lowest/Best Proposal</b>			
International Education Advantage LLC	P0078128	International Marketing & Advertising	\$50,394.75
<b>Sole Source, Customized To Fit</b>			
BBC Pump and Equipment Co Inc	P0077513	Pumps Customized For Dede Fountain	\$51,441.50
<b>Emergency, Electrical Power Out</b>			
Valley Electric	P832888	Voltage Switch Gear, University Apartments	\$52,800.00
<b>Missouri Valley Selected/Standardized Vendor</b>			
Alpha Video and Audio Inc	P0078078	Media Production Equipment	\$60,620.78
Alpha Video and Audio Inc	P0078132	Media Production Equipment	\$431,687.04
<b>Emergency, Hot Water Out Of Service</b>			
Affiliated Steam Equipment Company	P0077852	Hot Water Heater, Lincoln Quad	\$66,599.00

---

## 6d Vendor Report

The following vendors have accumulated purchases from the University for the time period July 1, 2014 through June 30, 2015 (Fiscal Year) in excess of \$250,000:

### Vendors with Purchases Exceeding \$250,000

#### May 1 - June 30, 2015

Refreshment Services Pepsi	\$ 251,654	ISU Dining Soft Drinks Contract
Marketability LLC	\$ 254,573	University Web Development Programming
Schmidt Associates Inc	\$ 261,417	Statesman Towers Demolition and Science Roof
Express Personnel Services	\$ 311,734	Engineering Services
GE Capital Information Technology Solutions Inc	\$ 333,013	Temporary Employee Services
Manpower Incorporated	\$ 336,580	Campus Copier Lease Agreement
HEF Services Inc	\$ 339,868	Temporary Employee Services
Ebsco Subscription Services	\$ 364,727	Miscellaneous Electrical Projects
InsideTrack Inc	\$ 643,499	Library Subscriptions Services
ElectriCom LLC	\$ 285,487	Freshmen Mentoring Services
Lyrasis	\$ 265,294	Telecommunication Supplies
		E-Library Database Licensing Fees

Ricoh USA Inc	\$	424,276	Campus Copier Copy Charges and Job Charges for the Departments
Woodburn Graphics Inc	\$	351,496	University Printing Services
US Postmaster	\$	287,508	Postage Expenses
<u>Previously Reported Vendors with Purchases Exceeding \$250,000</u>			
Incorp Incorporated	\$	271,881	Asbestos Abatement for Mills Hall Remodel and Stadium Dressing Room
C & K Industry Inc	\$	276,969	Servpro University Apartment's Fire Restoration Expenses
Rural Health Innovation Collaborative	\$	286,131	Operating and Simulation Center Expenses for the Rural Health Innovation Collaborative
Bell Industries Inc	\$	291,215	Microsoft Software License Payment
Blackboard Inc	\$	296,660	Blackboard Licensing Fees for Software
JWF Specialty Co.	\$	302,043	Workman's Compensation Reimbursements
Vectren Energy Delivery	\$	305,582	Gas Utility Payments
Evan and Ryan Electrical Contractors	\$	346,732	Field Campus Restroom, Career Center Restrooms, and Student Recreational Center Bike Storage Remodeling
Union Associated Physicians Clinic LLC	\$	372,585	Student Health Center Operating Expenses
SHI International Corp	\$	373,299	Novell Identity Maintenance Agreement for Banner Student and Finance
Scholastic Inc	\$	383,283	iRead Coaching and Hosting Service
Associated Roofing Inc	\$	457,854	African American Cultural Center and Tirey Hall Slate Roof Replacements
Network Solutions Inc	\$	469,055	Network Computer Equipment Maintenance Agreement and Purchase of Equipment
arcDESIGN	\$	473,855	Normal Hall Renovation
Barnes & Noble Booksellers	\$	487,757	Textbook Scholarships
Sycamore Engineering Inc	\$	501,665	Building Utility Metering Project and Plumbing and Mechanical Repairs
Otis Elevator	\$	540,683	Hulman Center and Jones Hall Elevator Renovation and Elevator Maintenance and Repairs
Ivy Tech	\$	588,347	Remedial Math Instruction
Indiana-American Water Company	\$	612,055	Water Utility Payments
SSI Services LLC	\$	680,000	Asbestos Abatement for Sycamore Towers
Staples Business Advantage	\$	704,975	Office Supplies and Equipment Purchases
Old National Insurance	\$	707,131	Property, Flight Academy, and Workers Compensation Insurance Premiums
Forrest Sherer Inc	\$	717,489	Insurance Premiums
Renascent Inc	\$	752,236	Demolition of Statesman Towers

ST Construction Inc	\$ 781,290	Dede Terrace Construction, Holmstedt Hall North Loop Drive, and River Campus Biking Walking Trail
Crown Electric Inc	\$ 832,990	North Residence Hall Electrical Construction and Hulman Center Emergency Generator
Delta Dental Plan of Indiana	\$ 946,961	Dental Claims Reimbursements University Advertising on Television and Billboards
Michael Walters Advertising	\$ 1,003,605	Reeve Hall Furniture
Foliot Furniture Inc	\$ 1,200,679	Sycamore Towers Phase I, II, IV, and Multi- Purpose Track and Soccer Venue
Ratio Architects Inc	\$ 1,252,219	Life and Long Term Disability Insurance
Symetra Life Insurance Company	\$ 1,278,258	North Residence Hall Mechanical Construction
A A Huber and Sons Inc	\$ 1,357,477	ISU Bus Service, Fire Protection and Sewage Charges
City of Terre Haute	\$ 1,379,400	Natural Gas Purchases
EDF Trading North America LLC	\$ 1,996,453	Retiree Insurance Coverage
AmWins/NEBCO Group Benefits	\$ 2,190,887	Computer Equipment Purchases
Lenovo Inc	\$ 2,227,382	Prescription Drug Coverage
Medco Health Solutions	\$ 2,585,103	Academic Courses
Indiana Department of Corrections	\$ 2,704,128	Multi-Purpose Track and Soccer Field Construction
CDI Inc	\$ 3,488,713	Electricity Utility Payments
Duke Energy	\$ 6,368,845	Retirement Contributions
TIAA-CREF	\$ 9,764,580	Normal Hall Renovation
Weddle Brothers Construction Co Inc	\$ 10,107,044	Dining and Catering Services
Sodexo Inc and Affiliates	\$ 12,715,858	Medical Claim Payments
CIGNA Health Care	\$ 14,763,488	Mills Hall and Science Lab Renovation and Reeve Residence Hall Construction
Hannig Construction Inc	\$ 18,981,758	

The following vendors have accumulated purchases from the University for the time period July 1, 2015 through July 31, 2015 (Fiscal Year) in excess of \$250,000:

Ellucian Company LP	\$ 256,108	Banner Maintenance Payment
CDI Inc	\$ 382,723	Science Building Re-Roof
Renascent Inc	\$ 421,415	Demolition of Statesman Towers
Duke Energy	\$ 497,080	Electricity Utility Payments
CIGNA Health Care	\$ 1,359,950	Medical Claim Payments
Weddle Brothers Construction Co Inc	\$ 2,553,338	Normal Hall Renovation
Hannig Construction Inc	\$ 2,741,234	Mills Hall, Blumberg Hall Renovation and Holmstedt Hall Restroom Renovation

## 6e Faculty Personnel

### Appointments

(Effective August 1, 2015 unless otherwise noted)

Shaad Ahmad; Assistant Professor, Department of Biology; Ph.D., Stanford University; salary \$60,000 per academic year.

Charles Armstrong; Assistant Professor, Department of Art and Design; M.F.A., Indiana State University; salary \$54,000 per academic year.

Kirk Armstrong; Associate Professor, Department of Applied Medicine and Rehabilitation; Ed.D., Ball State University; salary \$87,400 per fiscal year; effective July 1, 2015.

David Fleming; Associate Professor, Department of Marketing and Operations; Ph.D., University of Southern Florida; salary \$115,000 per academic year.

Carla Honselman; Associate Professor, Department of Applied Health Sciences; Ph.D., University of Illinois; salary \$75,000 per academic year.

Reza Houston; Assistant Professor, Department of Accounting, Finance, Insurance, and Risk Management and Director of Networks Financial Institute Research, Scott College of Business; M.B.A., Indiana State University; salary \$114,000 per academic year.

Kevin Jordan; Assistant Professor, Department of Psychology; Ph.D., The University of Utah; salary \$58,000 per academic year.

Jessica Mikeska; Assistant Professor, Department of Marketing and Operations; Ph.D., University of Nebraska-Lincoln; salary \$100,000 per academic year.

Donna Selman; Chairperson and Professor, Department of Multidisciplinary Studies; Ph.D., Western Michigan University; base salary \$98,000 per academic year; chair supplement of \$1,200 per month.

Amos Winter; Chairperson and Professor, Department of Earth and Environmental Systems; Ph.D., Hebrew University of Jerusalem; salary \$95,000 per academic year; chair supplement of \$1,500 per month.

### Instructor Appointments of 2-5 years – 2015-2016 Academic Year

(Effective August 1, 2015 unless otherwise stated)

Heather Adams, Instructor, Department of Applied Medicine and Rehabilitation; M.S., Indiana State University; salary \$38,204 per academic year.

Nandini Bhowmick; Instructor, Department of Mathematics and Computer Science; Ed.D., University of Minnesota; salary \$50,000 per academic year.

William Burge; Instructor, Department of Human Resource Development and Performance Technologies; M.S., Texas Tech University; salary \$60,000 per academic year.

Braden Cole; Instructor, Department of Kinesiology, Recreation, and Sport; M.A., Indiana State University; salary \$38,391 per academic year.

Walter Dininger; Instructor, Department of Kinesiology, Recreation, and Sport; M.S., Indiana State University; salary \$38,391 per academic year.

Pamela Gresham; Instructor, Department of Teaching and Learning, and Director of the Bayh Education Scholars to Teachers (BEST) Program, Bayh College of Education; Ph.D., Indiana State University; salary \$57,000 per academic year.

Steven Gruenewald; Instructor, Department of Applied Health Sciences; Ed.D., Nova Southern University; salary \$50,500 per academic year.

Kathleen Huun; Instructor, Department of Baccalaureate Nursing Completion; Ph.D., Florida State University; salary \$77,848 per academic year.

Daniel Lucky; Instructor, Department of Baccalaureate Nursing Completion; Ph.D., University of Southern Indiana; salary \$67,184 per academic year.

Robert McMahan; Instructor, Department of Accounting, Finance, Insurance, and Risk Management; J.D., Indiana University School of Law; salary \$43,911 per academic year.

Tyler Nolting; Instructor, Department of Applied Health Sciences; M.P.H., Indiana University; salary \$50,200 per academic year.

Robert Owegi; Instructor, Department of Baccalaureate Nursing; M.S.N., Indiana State University; salary \$55,459 per fiscal year.

Brian Pike; Instructor, Department of Kinesiology, Recreation, and Sport; M.S.R., Indiana University; salary \$37,638 per academic year.

Joyce Robinson; Instructor, Department of Human Resource Development and Performance Technologies; Ph.D., Southern Illinois University; salary \$55,000 per academic year.

#### **Full-Time Appointments – 2015-2016 Academic Year**

(Effective August 1, 2015 unless otherwise stated)

Travis Behem; Full-Time Lecturer, Department of Criminology and Criminal Justice; M.S., Indiana State University; salary \$37,638 per academic year.

Linda Edwards; Full-Time Lecturer, Department of Management, Information Systems, and Business Education; M.S., Indiana Wesleyan University; salary \$43,911 per academic year.

Mark Frederick; Full-Time Lecturer and Research Associate, Extended Learning; Ph.D., Indiana State University; salary \$51,000 per academic year.

Johnathan Gerber; Full-Time Lecturer, Department of Political Science; Ph.D., Washington State University; salary \$36,720 per academic year.

Colleen Haas; Full-Time Lecturer, Department of History; Ph.D., Indiana University; salary \$30,600 per academic year.

Gary Hartsock; Full-Time Lecturer; M.S., Indiana State University; salary \$37,638 per academic year.



Jason Huffman; Full-Time Lecturer, Department of Mathematics and Computer Science; M.S., Indiana State University; salary \$40,800 per academic year.

Aimee Jacobs; Full-Time Lecturer, Department of Mathematics and Computer Science; Ph.D., University of Reading, United Kingdom; salary \$53,300 per academic year.

Anand Richard; Full-Time Lecturer, Department of Electronics and Computer Engineering Technology; M.S., Indiana State University; salary \$50,000 per academic year.

Michael Speck; Full-Time Lecturer, Department of Theater; M.F.A., Western Illinois University; salary \$45,000 per academic year.

Jennifer Todd; Full-Time Lecturer, Department of Social Work; M.S.W., University of Cincinnati; salary \$48,000 per academic year.

Yana Weinstein; Full-Time Lecturer, School of Music; M.M., The Ohio State University; salary \$38,000 per academic year.

### **Temporary Part-Time Appointments – 2015 Fall Semester**

(Effective August 1, 2015 unless otherwise noted)

Stephen Baldwin; Part-Time Lecturer, Department of Built Environment; M.B.A., Liberty University; three hours; salary \$3,600.

Michael Ball; Part-Time Lecturer, Department of Aviation Technology; Master of Aeronautical Science, Embry-Riddle Aeronautical University; three hours; salary \$3,075.

David Beach; Part-Time Lecturer, Department of Electronics and Computer Engineering Technology; Ph.D., University of Missouri – Columbia; six hours; salary \$7,344.

Kitty Berry-Austin; Part-Time Lecturer, Department of Applied Medicine and Rehabilitation; M.S., Indiana State University; three hours; salary \$3,000.

Errett Bozarth; Part-Time Lecturer, Department of Aviation Technology; B.S., U.S. Naval Academy; six hours; salary \$6,120.

Gerald Cockrell; Professor Emeritus, Department of Electronic & Computer Engineering Technology; Ph.D., Indiana University; three hours; salary \$3,672.

Sally Davies; Part-Time Lecturer, Department of Communication Disorders and Counseling, School, and Educational Psychology; M.E., Indiana State University; three hours; salary \$3,075.

Julie DeVault-McNichols; Part-Time Lecturer, Department of Teaching and Learning; M.S., Indiana State University; three hours; salary \$3,000.

Melissa Dreher; Part-Time Lecturer, Department of Communication Disorders and Counseling, School, and Educational Psychology; M.S., Indiana State University; three hours; salary \$3,000.

Robert Farrington; Part-Time Lecturer, Department of Electronics and Computer Engineering Technology; B.S., Indiana State University and Rose Hulman Institute of Technology' six hours; salary \$7,344.

Jessica Fields; Part-Time Lecturer, Department of History; M.A., Indiana State University; six hours; salary \$6,273.

Cynthia Gloye; Part-Time Lecturer, Department of Communication Disorders and Counseling, School, and Education Psychology; M.Ed., Indiana State University; three hours; salary \$3,137.

Antonio Golan; Part-Time Lecturer, Department of Communication; M.A., College of Staten Island; nine hours; salary \$9,000.

Bethany Hutchins; Part-Time Lecturer, Department of Criminology and Criminal Justice; M.S., Indiana State University; three hours; salary \$3,000.

Richard Jinbo; Assistant Professor Emeritus, Department of Electronics and Computer Engineering Technology; M.Ed., Bowling Green State University; six hours; salary \$7,344.

Malynda Johnson; Part-Time Lecturer, Department of Communication; Ph.D., University of Wisconsin-Milwaukee; six hours; salary \$6,120.

Megan Kirk; Part-Time Lecturer, Department of Communication Disorders and Counseling, School, and Educational Psychology; Ph.D., Indiana State University; three hours; salary \$3,000.

Tresa Makosky; Part-Time Lecturer, Department of Theater; M.F.A., The University of Iowa; eight hours; salary \$8,160.

Melody Marley; Part-Time Lecturer, Department of Department of Communication Disorders and Counseling, School, and Educational Psychology; M.Ed., Indiana State University; four hours; salary \$4,000.

Stephen Moore; Part-Time Lecturer, Department of Science Education; M.S., Indiana State University; four hours; salary \$4,000.

Charles Peebles; Part-Time Lecturer, Department of Applied Medicine and Rehabilitation; B.S., Capella University; three hours; salary \$6,243.

Richard Setliff; Part-Time Lecturer, Department of Economics; Ph.D., Indiana State University; three hours; salary \$3,200.

Kimberly Smith; Part-Time Lecturer, Department of Built Environment; M.S., The University of Vermont; three hours; salary \$3,600.

Phillip Thompson; Part-Time Lecturer, Department of Multidisciplinary Studies; Ph.D., Southern Illinois University; six hours; salary \$7,200.

Douglas Timmons; Associate Professor Emeritus, Department of Built Environment; Ph.D., West Virginia University; three hours; salary \$3,933.

Martin White; Part-Time Lecturer, Department of Built Environment; B.S., Rose Hulman Institute of Technology (special credentials on file); three hours; salary \$3,600.

Christine Woodward; Part-Time Lecturer, Department of Criminology and Criminal Justice; M.S., Ferris State University; three hours; salary \$3,000.

Jason Wrench; Part-Time Lecturer, Department of Communication; Ed.D., West Virginia University; three hours; salary \$3,750.

Jalal Zreba-Dover; Part-Time Lecturer, Department of Aviation Technology; B.S., Indiana State University; nine hours; salary \$9,225.

### **Temporary Part-Time Appointments – 2016 Spring Semester**

(Effective January 1, 2016 unless otherwise noted)

Sally Davies; Part-Time Lecturer, Department of Communication Disorders and Counseling, School, and Educational Psychology; M.E., Indiana State University; three hours; salary \$3,075.

Cynthia Gloye; Part-Time Lecturer, Department of Communication Disorders and Counseling, School, and Education Psychology; M.Ed., Indiana State University; three hours; salary \$3,137.

Megan Kirk; Part-Time Lecturer, Department of Communication Disorders and Counseling, School, and Educational Psychology; Ph.D., Indiana State University; three hours; salary \$3,000.

Melody Marley; Part-Time Lecturer, Department of Department of Communication Disorders and Counseling, School, and Educational Psychology; M.Ed., Indiana State University; three hours; salary \$3,000.

### **Change of Status and/or Pay Rate**

Daniel Clark; Associate Professor, Department of History; stipend of \$3,000 for additional duties as Coordinator of Social Science Education Program; for the 2015-2016 academic year.

William Clyburn; from Associate Professor, Department of Electronics and Computer Engineering Technology, to Interim Chairperson and Associate Professor, Department of Electronics and Computer Engineering Technology; stipend of \$1,200 per month for additional duties as Interim Chairperson; for the 2015-2016 academic year.

Dianna Cooper-Bolinsky; from Assistant Professor, Department of Social Work, to Chairperson and Assistant Professor, Department of Social Work; chairperson supplement of \$1,200 per month; salary \$90,400 per fiscal year, prorated from the effective date of May 26, 2015.

Gaston Fernandez; from Professor, Department of Political Science, to Interim Chairperson and Professor, Department of Political Science; stipend of \$1,500 per month for additional duties as Interim Chairperson; for the 2015-2016 academic year.

David Fleming; Associate Professor, Department of Marketing and Operations; stipend of \$15,000 per fiscal year for additional duties as Director of the Sales and Negotiations Center, Scott College of Business; effective July 1, 2015 through June 30, 2018.

Swapan Ghosh; Professor Emeritus, Department of Biology; phased retirement stipend of \$48,580; effective August 1, 2015 through May 31, 2016.

Lea Hall; Associate Professor, Department of Advanced Practice Nursing, and Executive Director of Nursing, School of Nursing, College of Health and Human Services; change in salary to \$135,459; effective July 1, 2015.

Rosetta Haynes; Professor, Department of English; ten percent promotion increase to 2015-2016 base; salary \$70,827; effective August 1, 2015.

Diana Hews; Interim Chairperson and Professor, Department of Biology; stipend of \$13,700 for additional duties as Interim Chairperson; for the 2015-2016 academic year.

Amila Jeewandara; Instructor, Department of Chemistry and Physics; change in salary to \$47,950; effective August 1, 2015.

Mark Lewandowski; Professor, Department of English; ten percent promotion increase to 2015-2016 base and \$4,780 floor adjustment; salary \$70,444; effective August 1, 2015.

Constance McLaren; Professor, Department of Marketing and Operations; supplemental instructional stipend of \$3,000 for teaching an additional three hours; for the fall semester of the 2015-2016 academic year.

Harry Minniear; Associate Professor, Department of Aviation Technology; from twelve-month fiscal faculty to ten-month academic year faculty; salary \$82,253; effective August 1, 2015.

John Pommier; from Interim Chairperson, Department of Applied Medicine and Rehabilitation and Professor, Department of Kinesiology, Recreation, and Sport, to Chairperson, Department of Applied Medicine and Rehabilitation, and Professor, Department of Kinesiology, Recreation, and Sport; chairperson supplement of \$1,800 per month; salary \$141,259; effective July 1, 2015.

Eulsun Seung; Associate Professor, Department of Chemistry and Physics; stipend of \$3,000 for additional duties as Director of Science Education; for the 2015-2016 academic year.

Ali Mehran Shahhosseini; Associate Professor, Department of Applied Engineering and Technology Management; stipend of \$10,000 for additional duties as Interim Director of the Ph.D. Program for Technology Management; for the 2015-2016 academic year.

Stephen Shure; Assistant Professor Emeritus, Department of Aviation Technology; phased retirement stipend of \$33,992; effective August 1, 2015 through May 31, 2016.

Erik Southard; from Assistant Professor, Department of Advanced Practice Nursing, to Chairperson and Assistant Professor, Department of Advanced Practice Nursing; base salary \$94,000 per fiscal year; chair supplement of \$1,500 per month; effective July 1, 2015.

Thomas Steiger; Professor, Department of Multidisciplinary Studies and Director for the Center for Student Research and Creativity; supplemental instructional stipend of \$1,000 for teaching one additional hour; for the spring semester of the 2014-2015 academic year; continuation as Director for the Center for Student Research and Creativity; effective July 1, 2015 through June 30, 2016; no change in salary.

Felicia Stewart; Assistant Professor, Department of Advanced Practice Nursing; from twelve-month fiscal faculty, to ten-month academic year faculty; salary \$74,057; effective August 1, 2015.

Steven Stofferahn; Associate Professor, Department of History; stipend of \$5,000 for additional duties as Faculty Fellow in for the Center for Community Engagement; effective August 1, 2015 through May 31, 2016.

Elaina Tuttle; Professor, Department of Biology; stipend of \$26,921 per fiscal year as Interim Associate Dean for Graduate Programs, College of Graduate and Professional Programs; stipend prorated from the effective date of June 1, 2015.

### **Promotion to Full Professor**

Rosetta Haynes; Department of English

Mark Lewandowski; Department of English

### **Tenure**

(effective August 1, 2015)

Donna Selman, Department of Multidisciplinary Studies

Amos Winter, Department of Earth and Environmental Systems

### **Leave of Absence with Pay – Spring 2016 Semester**

Alan Czyzewski; Professor, Department of Accounting, Finance, Insurance, and Risk Management.

### **Leave of Absence Changes**

Guoping Zhang; Professor, Department of Chemistry and Physics; from leave, with 60% pay, January 1, 2016 through December 31, 2016, to leave, with 60% pay, August 1, 2016 through May 31, 2017.

### **Retirements**

Peggy Balensuela; Professor, School of Music; effective August 1, 2015.

### **Emeriti**

Peggy Balensuela, Professor Emerita, School of Music; effective August 1, 2015.

William Davis; Associate Professor Emeritus, School of Music; effective November 28, 2014.

### **Separations**

Joe Ashby; Associate Professor, Department of Electronics and Computer Engineering Technology; effective May 31, 2015.

Karen Bacher; Instructor, Department of Applied Health Sciences; effective 5/31/2015.

Lisa Borrero; Assistant Professor, Department of Applied Health Sciences; effective May 31, 2015.

Kathleen Clifford; Full-Time Lecturer, Department of Communication Disorders and Counseling, School, and Educational Psychology; effective May 31, 2015.

Carolyn Gross; Instructor and Director of Athletic Bands, School of Music; effective May 31, 2015.

Mary Sterling; Associate Professor, Department of Built Environment; effective May 31, 2015.

Devaditra Talapatra; Assistant Professor, Department of Communication Disorders and Counseling, School, and Educational Psychology; effective May 31, 2015.

---

## 6f Other Personnel

### Non-Exempt

#### Appointments

Aaron Chancy; Area Gardener, Facilities Management – Grounds; \$11.49/hr; effective July 6, 2015.

Morgan Dull; Enrollment Management Specialist, Admissions and High School Relations; \$12.48/hr; effective July 27, 2015.

Michael Gwin; Area Gardener, Facilities Management – Grounds; \$11.49/hr; effective July 6, 2015.

Kelly Hallett; Groundskeeper; Facilities Management – Grounds; \$10.20/hr; effective July 6, 2015.

Jacob Hibschan; Enrollment Management Specialist, Admissions and High School Relations; \$12.48/hr; effective July 27, 2015.

Todd Hughbanks; Custodian II, Sandison Housing; \$10.20/hr; effective July 13, 2015.

Daniel May; Area Gardener, Facilities Management – Grounds; \$11.49/hr; effective July 13, 2015.

Shelby McConnaughey; Administrative Assistant I – 9/10, University Faculty Senate; \$12.48/hr; effective August 10, 2015.

Kendra McCrea; Library Associate I Spec Coll, Library Services; \$10.61/hr; effective July 27, 2015.

Janet Reed; Custodian I, Burford Housing; \$10.20/hr; effective June 15, 2015.

Kayla Smith; Administrative Assistant I, Central Housing; \$12.48/hr; effective August 3, 2015.

John Solmon; Senior Maintenance Mechanic; \$17.93/hr; effective July 13, 2015.

Kara Sterling; Administrative Assistant I, Center for Global Engagement; \$12.48/hr; effective August 3, 2015.

Nicholas Stewart; Custodian II, Buford Housing; \$10.20/hr; effective June 22, 2015.

Amber Wilcox; Laboratory Research Assistant, IU School of Medicine – Terre Haute; \$15.00/hr; effective May 26, 2015.

#### Separations

Jessica Beard; Enrollment Management Specialist; Admissions and High School Relations; effective June 10, 2015.

Misty Bolinger; Early Childhood Assistant Teacher; Early Childhood Education Center; effective July 24, 2015.

Robert Chance; Custodian I, Sycamore Housing; effective May 28, 2015.

Edith Fitch; Administrative Assistant I, Sycamore Housing; effective June, 3, 2015.

Jacob Hibschan; Enrollment Management Specialist, Admissions and High School Relations; effective August 3, 2015.

Craig Kemp; Area Gardener, Facilities Management – Grounds; effective June 8, 2015.

Loren Kerr; Lead Gardener, Facilities Management – Grounds; effective August 14, 2015.

Rebecca Kinney; ISBDC Specialist, ISU/Wabash Valley Small Business Development Center; effective August 7, 2015.

Scott Leverenz; Groundskeeper, Facilities Management – Grounds; effective July 28, 2015.

Ricardo Mata; Dean's Assistant, College of Graduate & Professional Studies; effective June 18, 2015.

James Montgomery, Custodian II, Sycamore Housing; effective July 27, 2015.

Dustin Morgan, Area Gardener, Facilities Management; effective June 26, 2015.

Monique Mosley; Administrative Assistant I, Office of Diversity; effective July 17, 2015.

Jana Pyle; Administrative Assistant II, Institute for Community Sustainability; effective September 30, 2015.

Blake Reynolds; Administrative Assistant I, School of Music; effective July 23, 2015.

Sharon Russell; Custodian I, Facilities Management – Custodian; effective August 5, 2015.

Patricia Snyder; Student Services Assistant II, Communication Disorders & Counseling, School & Educational Psychology; effective August 3, 2015.

Carol Thomas; Budget Coordinator, School of Music; effective August 5, 2015.

Jason Tolliver; Utility Worker I, Facilities Management – Utility; effective July 27, 2015.

Kimberly Vanwey; Administrative Assistant I, Networks; effective July 17, 2015.

Karen Wells, Custodian I, Facilities Management; effective April 2, 2015.

### **Retirements**

Larry Craft; Utility Worker II, Facilities Management; effective June 19, 2015.

Samuel Hill; Grounds Equipment Operator, Grounds; effective May 29, 2015.

Barbara Landini; Executive Assistant, Secretary of University; effective July 31, 2015.

William Shadden; Utility Worker I, Facilities Management; effective July 31, 2015.

Brenda Swisher; Library Associate I, Library Services; effective July 6, 2015.

### **Change in Status and/or Pay Rate**

#### **Promotion**

Lori Davis; from Administrative Assistant II, Department of Educational Leadership; \$14.27/hr to IPLI Program Coordinator, Department of Educational Leadership; \$17.10/hr; effective June 30, 2015.

Gina Jordan; from Student Services Assistant II, College of Graduate & Professional Studies; \$15.18/hr to Dean's Assistant, College of Graduate & Professional Studies; \$18.29/hr; effective June 22, 2015.

### **Transfers**

Jane Compton; from Administrative Assistant I, Sandison Housing; \$15.59/hr to Administrative Assistant I, Burford Housing; \$15.59/hr; effective July 1<sup>st</sup>, 2015.

Krista Divan; from Administrative Assistant I, Burford Housing; \$15.71/hr to Administrative Assistant I, Sandison Housing; \$15.71/hr; effective July 1<sup>st</sup>, 2015.

Sharman Woll; from Administrative Assistant I, Central Housing; \$13.64/hr to Special Projects Assistant, Central Housing; \$13.64/hr; effective June 6, 2015.

### **Reclassification**

Teresa Williams; from Administrative Assistant II, \$17.72/hr to Facilities Maintenance Management System Coordinator; \$19.60/hr, Facilities Management; effective May 13, 2015.

### **Other**

Joshua Bemis; Refrigeration Mechanic, Central Housing; pay rate correction from \$14.92 to \$15.50/hr; effective May 11, 2015.

Donald Benko; Maintenance Supervisor, Central Housing; pay rate correction from \$18.03/hr to \$21.43/hr; effective April 27, 2015.

Lisa McDaniel, pay rate change from Dean's Assistant, VP for Student Affairs; \$18.52/hr to Dean's Assistant, VP for Student Affairs; \$20.37/hr; effective June 6, 2015.

Andrew Piske; skill assessment from Police Officer, Public Safety; \$18.47/hr to Police Officer; Public Safety; \$19.20/hr; effective July 11, 2015.

### **EXEMPT**

#### **Appointments**

Kristi Barley; International Affairs Assistant Director - Faculty Initiatives, Center for Global Engagement; B.S., Minot State University; salary \$40,190 per fiscal year; effective July 1, 2015.

Tyler Barley; Hardware Support Specialist, Office of Information Technology; B.S., Indiana State University; salary \$39,000 per fiscal year, prorated from the effective date of June 22, 2015.

Alexander F. Barrett; Training Specialist and Human Resources Generalist, Department of Human Resources; M.P.A., Indiana State University; salary \$40,000 per fiscal year, prorated from the effective date of August 3, 2015.

Bill Benson; Simulation Technologist, Dean, College of Health and Human Services; A.S., Ivy Tech Community College; salary \$50,000 per fiscal year, prorated from the effective date of July 29, 2015.

Alison Breiding; Development Math Coordinator, Department of Mathematics and Computer Science; M.S., Indiana State University; salary \$48,000 per fiscal year, prorated from the effective date of August 1, 2015.

Miles Chatterji; Systems Integrator, Office of Information Technology; B.S., Indiana State University; salary \$48,000 per fiscal year, prorated from the effective date of June 29, 2015.



Tiandra Finch; Probation and Mentoring Programs Associate Director, Dean, University College; M.B.A., Wright State University; salary \$46,000 per fiscal year, prorated from the effective date of August 3, 2015.

Sarah Ford; The Center for Genomic Advocacy Laboratory Technician, Department of Biology; B.S., Indiana State University; salary \$32,000 per fiscal year, prorated from the effective date of June 15, 2015.

Holly N. Gilbert; Human Resources Generalist, Department of Human Resources; B.S., Indiana State University; salary \$40,000 per fiscal year, prorated from the effective date of August 4, 2015.

Emily Haltom; Remedial Math Educator, Department of Mathematics and Computer Science; B.S., Indiana State University; salary \$40,000 per fiscal year, prorated from the effective date of August 3, 2015; with a no work period for the months of June and July.

Mary Herrington-Perry; Assessment and Accreditation Coordinator, Assessment and Accreditation; Ph.D., Indiana State University; salary \$80,000 per fiscal year, prorated from the effective date of August 1, 2015.

Meredith Lynn; Gallery Director, Department of Art and Design; M.F.A., University of Iowa; salary \$51,100 per fiscal year, prorated from the effective date of August 1, 2015.

Tracy Machtan; Associate Director, Fraternity & Sorority Life, M.S., DePauw University; \$52,000 per fiscal year, prorated from the effective date of June 5, 2015.

Jessica Markle; Remedial Math Educator, Department of Mathematics and Computer Science; B.S., Indiana State University; salary \$40,000 per fiscal year, prorated from the effective date of August 3, 2015; with a no work period for the months of June and July.

Seth Matteson; College of Health, and Human Services College Advisor, Dean, College of Health, and Human Services; M.S., Indiana State University; salary \$32,000, prorated from the effective date of June 1, 2015.

Chelsy Schnabel; Remedial Math Educator, Department of Mathematics and Computer Science; M.S., Indiana State University; salary \$40,000 per fiscal year, prorated from the effective date of August 3, 2015; with a no work period for the months of June and July.

Lance Walsh; Remedial Math Educator, Department of Mathematics and Computer Science; B.S., Indiana State University; salary \$40,000 per fiscal year, prorated from the effective date of August 3, 2015; with a no work period for the months of June and July.

### **Temporary Appointments**

Chinmai Basavaraj; Interim Drupal/Web Developer – Reappointment Required, Communications and Marketing; M.S., Indiana State University; salary \$33,000 per fiscal year; effective from July 6, 2015 through June 30, 2016.

Michelle Bennett; Program Coordinator, Dean, Extended Learning; B.A., Indiana State University; salary \$41,902 per fiscal year; effective July 1, 2015 through June 30, 2016.

Samuel Bunch; Information Technology Analyst, Central Housing; B.S., Indiana State University; salary \$34,126 per fiscal year; effective July 1, 2015 through June 30, 2016.

Jerry Caskey; Systems Integrator Trainee, Office of Information Technology; A.S., Lakeland Community College; salary \$43,485 per fiscal year; effective July 1, 2015 through June 30, 2016.

Elizabeth Coleman; Extended Learning Adviser/Recruiter, Continuing Education; B.A., Minnesota State University; salary \$36,338 per fiscal year; effective July 1, 2015 through June 30, 2016.

Martin Collins; from Web Content Developer to Drupal/Web Developer; Communications and Marketing; no change in salary; effective July 1, 2015.

Kaitlin Diel; Meis Student Development Center Assistant Director, Department of Management, Information Systems, and Business Education; M.B.A., Indiana State University; salary \$27,500 per fiscal year, prorated for the appointment period of July 1, 2015 through December 31, 2015.

Mary Doucette-Lunstrum; Distance Education Assistant Coordinator, Department of Criminology and Criminal Justice; J.D., Thomas M. Cooley Law School; salary \$40,000 per fiscal year; effective July 1, 2015 through June 30, 2016.

Katelunn DUBY-Edwardson; University College Adviser, University College; M.S., St. Mary-of-the-Woods College; salary \$34,000 per fiscal year, prorated for the appointment period of May 21, 2015 through June 30, 2016.

Nichole Goodwin; Residential Life Area Coordinator, Sandison Housing; M.S., The State University of New York; salary \$35,000 per fiscal year, prorated for the appointment period of July 13, 2015 through June 30, 2016.

Andrea Grunst; Postdoctoral Research Fellow, Center for Genomic Advocacy, Department of Biology; Ph.D., University of California; salary \$41,820 per fiscal year; effective July 1, 2015 through June 30, 2016.

Kelly Hall; Program Coordinator, IU School of Medicine – Terre Haute; B.S., Indiana State University; salary \$53,321 per fiscal year; effective July 1, 2015 through June 30, 2016.

Ashley Holt; Program Coordinator, IU School of Medicine – Terre Haute; M.S., Indiana State University; salary \$32,800 per fiscal year; effective July 1, 2015 through June 30, 2016.

Sumalayo Jackson; University College Adviser, Dean, University College; M.S., Indiana State University; salary \$34,000 per fiscal year, prorated for the appointment period of August 3, 2015 through June 30, 2016.

Amy Kingery; Career Services Employer Relations Coordinator, Career Center; B.S., Indiana State University; salary \$42,025 per fiscal year; effective July 1, 2015 through June 30, 2016.

Jacquelyn Mathis; West Central Indiana-Area Health Education Center Director, Dean, College of Health, and Human Services; M.S., Indiana State University; salary \$63,083 per fiscal year; effective July 1, 2015 through June 30, 2016.

Jennifer Moore, Career Services Employer Relation Coordinator, Career Center; B.S., St. Mary-of-the-Woods College; salary \$41,000 per fiscal year; effective July 1, 2015 through June 30, 2016.

Matthew Mosley; Admissions Welcome Center Counselor 9 month; Admissions and High School Relations; no work period from June 1, 2015 through August 31, 2015.

Elizabeth Nesius; Operations Supervisor, IU School of Medicine – Terre Haute; B.A., Indiana State University; salary \$47,405 per fiscal year; effective July 1, 2015 through June 30, 2016.

Grace Oliver; Business Intelligence Analyst, Office of Information Technology; B.S., Indiana State University; salary \$43,485 per fiscal year; effective July 1, 2015 through June 30, 2016.

Benjamin Patterson; Programmer Trainee, Office of Information Technology; B.S., Butler University; salary \$40,000 per fiscal year, prorated for the appointment period of June 15, 2015 through June 30, 2016.

Susan Pinkston; Financial Aid Counselor 9 month; Student Financial Aid; no work period from June 1, 2015 through August 31, 2015.

Matthew Porter; Field Campus Manager, Department of Kinesiology, Recreation, and Sport; B.S., Indiana State University; salary \$31,993 per fiscal year; effective July 1, 2015 through June 30, 2016.

Michelle Reeson; Professional Development Program Assistant Director, Networks Financial Institute; M.A., Indiana State University; salary \$67,958 per fiscal year; effective July 1, 2015 through June 30, 2016.

Courtney Richey; Indiana Small Business Development Center Program Director, Indiana State University/Wabash Valley Small Business Development Center; M.B.A., Indiana State University; salary \$67,500 per fiscal year; effective July 1, 2015 through June 30, 2016.

Brittany Russell; Program Coordinator, IU School of Medicine – Terre Haute; M.S., Indiana University; salary \$42,000 per fiscal year; effective July 1, 2015 through June 30, 2016.

Mark Schaffer; Contract Coordinator, Dean, College of Health, and Human Services; B.S., Indiana State University; salary \$47,341 per fiscal year; effective July 1, 2015 through June 30, 2016.

Jack Schroeder; 21<sup>st</sup> Century Scholar Corps Coordinator, Center for Student Success; M.S., Indiana State University; salary \$30,394 per fiscal year; effective July 1, 2015 through June 30, 2016.

Mary Seaward; Medical Education Specialist, Part-Time, IU School of Medicine – Terre Haute; M.S., Indiana State University; salary \$14,933 per fiscal year; effective July 1, 2015 through June 30, 2016.

David Smith; Programmer Trainee, Office of Information Technology; B.S., Indiana State University; salary \$42,000 per fiscal year, prorated for the appointment period of May 18, 2015 through June 30, 2016.

Travis Smith; Athletic Studies Coordinator, Athletic Academic Advisement; M.S., Indiana University; salary \$33,500 per fiscal year; effective July 1, 2015 through June 30, 2016.

James Snapp; Budget Specialist, IU School of Medicine – Terre Haute; B.S., Indiana State University; salary \$51,147 per fiscal year; effective July 1, 2015 through June 30, 2016.

Brett Taylor; Career Services Employer Relations Coordinator, Career Center; B.S., Indiana State University; salary \$39,000 per fiscal year; effective July 1, 2015 through June 30, 2016.

Raymond Thomas; Web Content Developer, Networks Financial Institute; British General Certificate of Education, Hengrove Comprehensive School; salary \$40,643 per fiscal year; effective July 1, 2015 through June 30, 2016.

Brianne Walters; Program Coordinator, Department of Biology; M.S., Indiana State University; salary \$42,975 per fiscal year; effective July 1, 2015 through June 30, 2016.

Carol Wetherell; Blumberg Center Director, Blumberg Center, Bayh College of Education; M.Ed, Eastern Illinois University; salary \$77,367 per fiscal year; effective July 1, 2015 through June 30, 2016.

Rebecca Wray; Gongaware Center and Networks Financial Institute Director, Networks Financial Institute, Scott College of Business; M.B.A., Indiana State University; salary \$112,750 per fiscal year; effective July 1, 2015 through June 30, 2016.

Gail Wright; Program Coordinator, West Central Indiana Area Health Education Center; B.S., Indiana State University; salary \$39,997 per fiscal year; effective July 1, 2015 through June 30, 2016.

### **Change of Status and/or Pay Rate**

Mark Adkins; from Interim Student Union Director, Hulman Memorial Student Union to Student Union Director, Hulman Memorial Student Union; \$72,000 per fiscal year, effective date of July 1, 2015.

Carrie Anderson; from Marketing Project Manager – Required Reappointment to Marketing Project Manager; Communications and Marketing; salary \$43,050 per fiscal year; prorated from the effective date of July 1, 2015.

Richard Baker; from Center for Unmanned Systems Consultant, Center for Unmanned Systems, to Chairperson and Associate Professor, Department of Aviation Technology, and Center for Unmanned Systems Consultant, Center for Unmanned Systems; salary \$125,400 per fiscal year, prorated from the effective date of May 1, 2015.

Steve Baker; from Systems Integrator, Office of Information Technology, to Instructor, Department of Mathematics and Computer Science; salary \$65,000 per academic year; effective August 1, 2015.

Lauren M. Campbell; Employee Wellness Coordinator, Department of Human Resources; change in salary to \$40,000 (equity adjustment) per fiscal year, effective August 1, 2015.

Anthony Certain; from Temporary Systems Integrator, Office of Information Technology, to Systems Integrator, Office of Information Technology; change in salary to \$46,644 per fiscal year, prorated from the effective date of May 1, 2015.

Elizabeth Coleman; from Temporary Extended Learning Adviser/Recruiter, Continuing Education, to Extended Learning Adviser/Recruiter, Continuing Education; no change in salary; effective July 1, 2015.

Tyler Cox; from Hardware Support Specialist, Office of Information Technology, to Systems Integrator, Office of Information Technology; salary \$46,644 per fiscal year, prorated from the effective date of May 18, 2015.

Ashleigh Crowe; from Problem and Mentoring Program Associate Director, Dean, University College, to First Year Student Outreach and Success Associate Director, Dean, University College; no change in salary; effective May 18, 2015.

Kathryn Elson; from Information Center consultant, Office of Information Technology, to Technology Systems Coordinator, Center for Community Engagement; salary \$53,000 per fiscal year, prorated from the effective date of June 22, 2015.

Ashley Gard; from Part-Time University College Adviser, Dean, University College, to University College Adviser, Dean, University College, to College of Health and Human Services College Adviser, Dean, College of Health and Human Services; no change in salary; effective July 20, 2015.

Emily Gruenert; from Temporary University College Adviser, Dean, University College, to University College Adviser, Dean, University College; no change in salary; effective of June 1, 2015.

Justin Hart; from Systems Integrator, Office of Information Technology, to Unified Communications Engineer, Office of Information Technology; salary \$59,594 per fiscal year, prorated from the effective date, June 15, 2015.

Jason Hiddle; from Web Content Developer to Senior Drupal/Web Developer; Communications and Marketing; no change in salary; effective August 10, 2015.

Cedric Jones; from Temporary University College Advisor, Dean, University College, to University College Adviser, Dean, University College; no change in salary; effective June 1, 2015.

Deirdre Mahan; from Interim Financial Aid Systems Manager to Financial Aid Systems Manager; salary \$60,000 per fiscal year; prorated from the effective date of July 1, 2015.

Loni Mantooth; Program Coordinator, New Student Transition Program; salary \$32,961 per fiscal year; one year reappointment from July 1, 2015 through June 30, 2016; from Program Coordinator; Commuter Graduation Programs to New Student Transition Programs Assistant Director; New Student Transition Programs; salary \$37,000 per fiscal year; prorated from the effective date of August 3, 2015.

C. Jack Maynard; from Interim Provost and Vice President for Academic Affairs, Vice President and Provost Office, to Provost Emeritus, Professor, and Director of the MBA in Educational Leadership, Department of Educational Leadership; salary \$212,350 per academic year; effective August 1, 2015.

Heather Dalton Miklozek; Community Engagement Director; University Engagement; change in salary to \$80,000, prorated from the effective date of July 1, 2015.

Nathan Moreland; Systems Integrator, Office of Information Technology; change in salary to \$49,803, prorated from the effective date of May 1, 2015.

Joseph M. Newport, Jr.; Employee Benefits Administrator, Department of Staff Benefits; change in salary to \$40,000 (equity adjustment) per fiscal year, effective August 1, 2015.

Ryan Payonk; from Welcome Center Counselor 9 month; Admissions and High School Relations; no work period from June 1, 2015 through August 31, 2015 to Admissions Counselor, Admissions and High School Relations; salary \$30,750 per fiscal year; prorated from the effective date of July 13, 2015.

Caroline Savage; title change from Institute Community Sustainability Assistant Director to Program Director, Institute for Community Sustainability; University Engagement; effective June 26, 2015.

Thomas Simon; Senior Research Scientist, Department of Biology; additional funding from FED193; addition to salary of \$23,724; effective March 1, 2015 through February 28, 2016; budget adjustment from SDN902; additional salary of \$18,845; effective June 1, 2015 through December 31, 2015; budget adjustment from SOT933; additional salary of \$2,654.79; effective July 1, 2015 through September 30, 2015.

Thomas Springer; from Temporary University College Advisor, Dean, University College, to University College Adviser, Dean, University College; no change in salary; effective June 1, 2015.

Maria Wiant; University College Advisor, Dean, University College; salary \$34,000 per fiscal year, prorated for the appointment period of May 1, 2015 through June 30, 2016.

## Separations

Vincent Applegate; New Student Programs Assistant Director; New Student Transition Programs; effective June 11, 2015.

Bill Benson; Simulation Technologist, College of Health and Human Services; effective July 30, 2015.

Channon Brown; Interim Equal Opportunity & Compliance Officer, Office of Equal Opportunity; effective August 7, 2015.

Jibby Brown; Blumberg Center Compliance/Instructional Specialist, Blumberg Center; effective June 30, 2015.

Donald Bonte; Center for Unmanned Systems Research Director, Center for Unmanned Systems Outreach; effective June 30, 2015.

Djanedi Cardwell; Enrollment Management Systems Coordinator; Admissions and High School Relations; effective June 5, 2015.

Joseph Cole; Technical Support Specialist, Dean, College of Health, and Human Services; effective July 31, 2015.

Marie Elliott; International Student Credentialing Coordinator; Admissions and High School Relations; effective June 19, 2015.

Austen Gage; Hulman Center/Conference and Event Services Marketing Coordinator, Hulman Center; effective May 26, 2015.

Maria Greniger; External Relational Representative for the Scott College of Business Gongaware Center, Dean, Scott College of Business; effective June 30, 2015.

Stephanie Jeffers; Career Services Coordinator, Career Center; effective June 19, 2015.

Meagan M. King; Human Resources Generalist, Department of Human Resources; effective July 24, 2015.

LaMetric Lane; Blumberg Center School Psychologist, Blumberg Center; effective date June 30, 2015.

Mary Marty; Student Employment Program Coordinator, Career Center; effective date July 31, 2015.

Troy Phelps; Business Advisor, ISU/Wabash Valley Business Development Center; effective date June 30, 2015.

Megan Smalley; Athletic Trainer I, Department of Applied Medicine and Rehabilitation; effective date July 31, 2015.

Thomas Springer; University College Advisor, Dean, University College; effective July 24, 2015.

Audra Trnovec; Career Services Assistant Director, Career Center; effective August 21, 2015.

Ashley Weir; Admissions Associate Director Student Services; Admissions and High School Relations; effective August 4, 2015.

Shengying Zhang; Staff Psychologist and Coordinator, Student Counseling Center, effective June 8, 2015.

## **ATHLETICS**

### **Appointments**

Gerald Alexander; PT No Benefits Assistant Coach, Football; annual salary \$41,000; effective July 20, 2015 through December 31, 2015.

Shane Bouman; Head Coach, Softball; annual salary \$69,526; effective July 1, 2015 through June 30, 2016.

Mitchell Eaglowski; Athletic Equipment Manager; annual salary \$28,000; effective June 18, 2015 .

Gregory Frey; Athletic Facilities/Operations Coordinator; annual salary \$34,000; effective July 30, 2015.

Luke Harris; Assistant Coach, Strength and Conditioning; annual salary \$24,000; effective July 1, 2015 through June 30, 2016.

Mitch Hannahs; Head Coach, Baseball; annual salary \$94,300; effective July 1, 2015 through May 31, 2018; multi-year contract amendment.

Samantha Heinzman; Assistant Coach, Softball; annual salary \$24,000; effective July 1, 2015 through June 30, 2016.  
Keith Hopkins; PT No Benefits Assistant Coach, Track & Field; annual salary \$12,000; effective August 1, 2015 through June 30, 2016.

Matthew Leach; Head Coach, Women's Swimming and Diving; annual salary \$55,000; effective July 1, 2015 through June 30, 2016; year 1 of 3 year contract.

David McMannus; Head Coach, Strength and Conditioning; annual salary \$62,730; effective July 1, 2015 through June 30, 2016.

Tamara Schaffer; Spirit Program and Community Relations Coordinator; annual salary \$26,202; effective July 1, 2015 through June 30, 2016.

James Schmeits; PT No Benefits Director of Basketball Operations, Men's Basketball; annual salary \$18,000; effective June 22, 2015 through March 31, 2016.

Brian Smiley; Assistant Coach, Baseball; annual salary \$39,422; effective July 1, 2015 through June 30, 2016.

John Stein; Assistant Coach, Strength and Conditioning; annual salary \$27,000; effective August 3, 2015 through June 30, 2016.

Jordan Tieg; Assistant Coach, Baseball; annual salary \$28,540; effective July 1, 2015 through June 30, 2016.

Gregory Towne; Head Coach, Women's Golf; annual salary \$43,937; effective July 1, 2015 through June 30, 2016.

Joey Wells; Head Coach, Women's Basketball; annual salary \$117,875; effective July 1, 2015 through April 1, 2017; multi-year contract amendment.

Tyler Wooten; Media Relations Coordinator; annual salary \$35,200; effective July 15, 2015.

### **Change in Status and/or Pay Rate/Promotion**

Jamison DeBerry; promotion to Assistant Coach, Football; annual salary \$42,000; effective July 10, 2015 through December 31, 2015.

Erin Gilreath; Assistant Coach, Track and Field; pay increase; annual salary \$37,000; effective July 1, 2015 through June 30, 2016.

Angela Martin; Head Coach, Women's Track and Field; pay increase; annual salary \$47,250; effective July 1, 2015 through June 30, 2016.

Jeffrey Martin; Assistant Coach, Track and Field and Cross Country; pay increase; annual salary \$38,000; effective July 1, 2015 through June 30, 2016.

John McNichols; Coordinator, Track and Field and Cross Country and Head Coach, Men's Track and Field and Cross Country; pay increase; annual salary \$80,000; effective July 1, 2015 through June 30, 2016.

Matthew Murphy; Assistant Coach, Football; pay increase; annual salary \$33,282; effective July 10, 2015 through December 31, 2015.

Vincent Natali; Assistant Coach, Football; pay increase; annual salary \$43,340; effective July 10, 2015 through December 31, 2015.

Krisstopher Proctor; Assistant Coach, Football; pay increase; annual salary \$31,000; effective July 10, 2015 through December 31, 2015.

Kyle Walsh; promotion to Head Coach, Women's Cross Country; annual salary \$38,000; effective July 1, 2015 through June 30, 2016.

Aaron Williams-Archie; PT No Benefits Assistant Coach, Football; pay increase; annual salary \$21,877; effective July 10, 2015 through December 31, 2015.

Amanda Züst; Assistant Coach, Softball; pay increase; annual salary \$37,000; effective July 1, 2015 through June 30, 2016.

### **Separations**

John Gartland; Head Coach, Women's Cross Country; retirement effective June 30, 2015.

Luke Harris; Assistant Coach, Strength and Conditioning; resignation effective July 24, 2015.

Samantha Heinzman; Assistant Coach, Softball; resignation effective August 15, 2015.

Sean Mang; Athletic Facilities/Operations Coordinator; resignation effective June 1, 2015.

Anthony Perkins; Assistant Coach, Football; resignation effective July 9, 2015.



## 6g Grants and Contracts

1. Purdue University, Fund No. 549010, Proposal No. 15-122

A sub agreement under AmericaView in the amount of \$3,000.00 has been received from Purdue University for the project entitled, “A Long-Term Reconstruction of Urban Expansion in Indianapolis, 1972-2015,” under the direction of Qihao Weng, Department of Earth and Environmental Systems, for the period April 15, 2015 through August 31, 2015.

2. Vigo County Local Coordinating Council, Fund No. 549013, Proposal No. 15-089

An agreement in the amount of \$6,018.00 has been received from Vigo County Local Coordinating Council for the project entitled, “Indiana State University Body Camera Project,” under the direction of Joseph Newport, Department of Public Safety, for the period April 28, 2015 through December 31, 2015.

3. Purdue University, Fund No. 549014, Proposal No. 15-131

A sub agreement under AmericaView in the amount of \$1,000.00 has been received from Purdue University for the project entitled, “Indiana View Student Scholarship,” under the direction of Peng Fu, Department of Earth and Environmental Systems, for the period April 15, 2015 through August 31, 2015.

4. Purdue University, Fund No. 549016, Proposal No. 15-132

A sub agreement under AmericaView in the amount of \$1,000.00 has been received from Purdue University for the project entitled, “Indiana View Student Scholarship,” under the direction of Lei Zhang, Department of Earth and Environmental Systems, for the period April 15, 2015 through August 31, 2015.

5. Wabash Valley Community Foundation, Fund No. 549015, Proposal No. 15-087

An agreement in the amount of \$5,000.00 has been received from Wabash Valley Community Foundation for the project entitled, “Pre-School Scholarships Project,” under the direction of Gail Gottschling, Department of Elementary, Early, and Special Education, for the period April 14, 2015 through June 30, 2015.

6. Indiana Arts Commission, Fund No. 549004, Proposal No. 15-107

An agreement in the amount of \$10,000.00 has been received from Indiana Arts Commission for the project entitled, “The Big Picture – Literacy Through Art,” under the direction of Petra Nyendick, Community School of the Arts, for the period March 20, 2015 through June 30, 2016.

7. USDA Forest Service, Fund No. 548841, Proposal No. 15-136

Additional appropriations in the amount of \$6,793.60 have been received from USDA Forest Service for the project entitled, “Appalachian Myotis sodalis: Estimating Occupancy of Indiana Bats on Northern Districts of the Cherokee National Forest,” under the direction of Joy O’Keefe, Department of Biology, for the period of March 14, 2013 through September 30, 2017.

8. MarkWest Energy Partners, L.P., Fund No. 549017, Proposal No. 15-104

An agreement in the amount of \$10,589.00 has been received from MarkWest Energy Partners, L.P. for the project entitled, “Bat Consultation Project,” under the direction of Joy O’Keefe, Department of Biology, for the period February 1, 2015 through January 31, 2016.

9. The United States Department of the Interior – The National Park Service/Great Smoky Mountain National Park, Fund No. 549018, Proposal No. 15-144

An agreement in the amount of \$100,985.00 has been received from The United States Department of the Interior- The National Park Service/Great Smoky Mountain National Park for the project entitled, “Population Monitoring and Habitat Use for White Nose Syndrome-Affected Bat Species,” under the direction of Joy O’Keefe, Department of Biology, for the period April 1, 2015 through September 30, 2015.

10. Stimulus Engineering Services, Inc., Fund No. 549021, Proposal No. 15-057

An agreement in the amount of \$14,412.00 has been received from Stimulus Engineering Services, Inc. for the project entitled, "Training Sessions Work Order #3," under the direction of William Baker, Built Environment, for the period February 4, 2015 through February 3, 2016.

11. Stimulus Engineering Services, Inc., Fund No. 549021 Proposal No. 16-005

Additional appropriations in the amount of \$21,592.00 have been received from Stimulus Engineering Services, Inc. for the project entitled, "Training Sessions Work Order #3 Mod. 1," under the direction of William Baker, Built Environment, for the period February 4, 2015 through February 3, 2016.

12. Vigo County School Corporation, Fund No. 549000, Proposal No. 15-095

A sub agreement under the Indiana Department of Education in the amount of \$18,430.00 has been received from Vigo County School Corporation for the project entitled, "Math and Science Partnership: Vigo County College and Career Success," under the direction of Susan Powers , Office of the Provost and Vice President for Academic Affairs, for the period February 1, 2015 through August 31, 2015.

13. Indiana Campus Compact, Fund No. 549028, Proposal No. 15-143

An agreement in the amount of \$3,750.00 has been received from Indiana Campus Compact for the project entitled, "Exploration of Various Health Organizations and Their Role in Monitoring, Controlling, and Preventing Disease as Defined by the Public Health Essential Services," under the direction of Kathryn Berlin, Department of Applied Health Sciences, for the period July 1, 2015 through May 31, 2016.

14. US Department of Education, Fund No. 549033, Proposal No. 15-082

An agreement in the amount of \$320,477.00 has been received from the US Department of Education for the project entitled, "Student Support Services at Indiana State University," under the direction of Rita Worrall, Student Support Services, for the period September 1, 2015 through August 31, 2016.

15. National Science Foundation, Fund No. 549037, Proposal No. 15-080

An agreement in the amount of \$236,926.00 has been received from the National Science Foundation for the project entitled, "MRI: Acquisition of a Liquid Chromatograph-Mass Spectrometer to Support Undergraduate Research," under the direction of Richard Fitch, Department of Chemistry and Physics, for the period August 1, 2015 through July 31, 2018.

16. The State of Indiana, Fund No. 549023, Proposal No. 15-119

An agreement in the amount of \$50,315.00 has been received from the State of Indiana for the project entitled, "Preserving Indiana's Memories," under the direction of Cinda May, Cunningham Memorial Library, for the period July 1, 2015 through April 30, 2016.

17. Quabache Land Conservancy, Fund No. 549034, Proposal No. 16-002

An agreement in the amount of \$5,006.00 has been received from Quabache Land Conservancy for the project entitled, "Otter Creek Watershed Water Quality Testing," under the direction of Jeffery Stone, Department of Earth and Environmental Systems, for the period July 10, 2015 through August 1, 2016.

18. The United States Department of the Interior-National Park Service, Fund No. 549003, Proposal No. 14-115

An agreement in the amount of \$42,324.00 has been received from The United States Department of the Interior-National Park Service for the project entitled, "Monitoring and Assessment of the Miller Woods Subunit for Attainment of Beneficial Use Impairments in the Grand Calumet River Area of Concern - INDU," under the direction of Thomas Simon, Department of Biology, for the period March 1, 2015 through December 31, 2016.

19. ISU Foundation, Fund No. 549019 & 549020, Proposal No. 15-145

An agreement in the amount of \$133,212.00 has been received from the ISU Foundation for the project entitled, “Fannie & Ben Blumberg 2015-2016,” under the direction of Carol Wetherell, Blumberg Center, for the period July 1, 2015 through June 30, 2016.

20. Vietnam Education Foundation, Fund No. 549025, Proposal No. 15-134

An agreement in the amount of \$56,580.00 has been received from the Vietnam Education Foundation for the project entitled, “Vietnam Education Foundation Fellowship,” under the direction of Qihao Weng, Department of Earth and Environmental Systems, for the period August 1, 2015 through July 31, 2017.

21. USDA Forest Service – Southern Research Station, Fund No. 549029, Proposal No. 15-154

An agreement in the amount of \$4,000.00 has been received from USDA Forest Service – Southern Research Station for the project entitled, “Bat Survey Located Within the Boundaries of the Pisgah National Forest,” under the direction of Joy O’Keefe, Department of Biology, for the period June 22, 2015 through August 14, 2015.

22. Stimulus Engineering Services, Inc., Fund No. 549036, Proposal No. 16-008

An agreement in the amount of \$14,412.00 has been received from Stimulus Engineering Services, Inc. for the project entitled, “Training Sessions Work Order #4,” under the direction of William Baker, Built Environment, for the period February 4, 2015 through February 3, 2016.

---

## 6h Agreements and Internships

### Clinical Affiliation Agreements June 1, 2015 – August 15, 2015

CHCA Conroe-L.P.-Conroe Regional Medical Center  
Eskenazi Health  
IU Health Goshen Physicians  
Martinsburg VA Medical Center  
Oregon Health & Science University  
Peak Vista Community Health Centers  
Perdue Foods LLC  
Presence Saints Mary and Elizabeth Medical Center  
Tacoma-Pierce County Health Department  
Greencastle Community School Corp.  
Rockford Health System  
Aurora Healthcare  
Sycamore Services, Inc.  
Neurosurgical Consultants  
Wesley Medical Center  
Union General  
Marzano Research Laboratories  
Robert J Dole VA Medical Center  
Christopher Rural Health PC  
Clark County Combined HD  
Denton County MHMR Center

Volunteers of America Chesapeake  
Comprehensive Dermatology  
Core School  
Southern Illinois University  
Glenview Rehab-Illinois Bone & Joint  
Holton Mano  
Mercy Hospital  
Southern Illinois Hospital  
Whitehall of Deerfield  
Adventist Hindsdale Hospital  
Southwest Parke Community Schools  
The Carle Foundation  
Deaconess Hospital  
ATI Holdings, LLC  
City of Hope  
Bainbridge Island School District  
Naval Hospital, Pensacola FL  
Intermountain HC-Layton Clinic  
Mercy Hospital  
ATI Holdings, LLC  
Edward Hospital  
Vigo County School Corporation  
Marshall Community Schools  
Vanderbilt University  
Vanderbilt University  
IU Health Bloomington  
North Central Parke Community Schools  
Mercy St. Vincent Medical Center  
Southwest Parke Community Schools  
Adventist Hindsdale Hospital  
Adventist Midwest Health  
Advance Education, Inc.  
The Medical College of Wisconsin, IN  
Glenview Rehab-Illinois Bone & Joint  
Edward Hospital  
ATI Holdings, LLC  
Texas Lutheran University  
Franciscan Alliance Crawfordsville  
Southwestern Healthcare, Inc.  
Franciscan-Alliance Crawfordsville  
Spartanburg Regional Healthcare  
Kaiser Permanente  
Reston Hospital  
Multnomah County Health Department  
Clark County Health Department  
Naval Hospital – Pensacola  
City of Hope  
Mercy Health  
Palmetto Health

Avera  
Memorial Hospital at Gulfport  
Greencastle Community School District

**Performance/Speaker Agreements**  
**June 1, 2015 – August 15, 2015**

Everything But the Mime  
Everything But the Mime  
Innerview International  
Daniel James-Bass/Schuler Entertainment  
Plaid LLC

---

**6i Board Representation at University Events**

**Events Requiring Board Representation**

September 16, 2015      2:30 pm, President Bradley’s Fall Address, Tilson Auditorium, Tirey Hall  
   3:30 pm, President’s Fall Reception, Heritage Lounge & Ballroom, Tirey Hall  
October 15, 2015      6:00 pm, Sesquicentennial Gala, Sycamore Banquet Center, Terre Haute, IN  
October 16, 2015      10:00 am, Rededication of Normal Hall  
11:30 Board of Trustees Lunch & Meeting, Terre Haute, IN  
   3:00 pm, Trike Race, Michaels Simmons Student Activity Center  
   6:00 pm, Distinguished Alumni Reception and Program, Sycamore Banquet Center, HMSU  
October 17, 2015      Homecoming, Terre Haute, IN  
   9:00 am, Blue and White Parade, Viewing Stand, 30 N. 5<sup>th</sup> St.  
   11:00 am, Tent City, ISU Memorial Stadium  
   3:05 pm ISU Football vs. Southern Illinois, ISU Memorial Stadium

**Optional Events**

September 5, 2015      12:00 pm, Alumni Pre-game  
   3:00 pm, ISU Football vs. Butler, Memorial Stadium, Terre Haute, IN  
September 12, 2015      10:00 am, Alumni Pre-game  
   12:00 pm, ISU Football vs. Purdue, West Lafayette, IN

**If you are planning to attend any of these events, please contact Kay Ponsot so that the appropriate arrangements can be made. Contact Kay at (812)237-7768 or [kay.ponsot@indstate.edu](mailto:kay.ponsot@indstate.edu).**

---

## 6j Memorials

### **IN MEMORIAM: Dr. John J. Corrigan**

WHEREAS, Dr. John J. Corrigan, Professor Emeritus of Life Sciences of Indiana State University, died on the twenty ninth day of May two thousand and fifteen; and

WHEREAS, Dr. John J. Corrigan had given loyal and devoted service to Indiana State University for over thirty one years and had gained the respect of students and colleagues who knew him as a scholar, teacher and friend;

THEREFORE, BE IT RESOLVED, that the Indiana State University Board of Trustees by this Resolution expresses to his family deep sympathy and condolence and further expresses gratitude and respect for the dedicated service which he gave to the University; and

BE IT FURTHER RESOLVED, that this Resolution be spread on the records of the minutes of the Indiana State University Board of Trustees, and that a copy thereof be duly executed and transmitted to his family.

### **IN MEMORIAM: Mr. Reno C. Foli**

WHEREAS, Mr. Reno C. Foli, Assistant Professor Emeritus of Economics of Indiana State University, died on the third day of July two thousand and fifteen; and

WHEREAS, Mr. Reno C. Foli had given loyal and devoted service to Indiana State University for over twenty four years and had gained the respect of students and colleagues who knew him as a scholar, teacher and friend;

THEREFORE, BE IT RESOLVED, that the Indiana State University Board of Trustees by this Resolution expresses to his family deep sympathy and condolence and further expresses gratitude and respect for the dedicated service which he gave to the University; and

BE IT FURTHER RESOLVED, that this Resolution be spread on the records of the minutes of the Indiana State University Board of Trustees, and that a copy thereof be duly executed and transmitted to his family.

### **IN MEMORIAM: Maudie Dorothea Pennell**

WHEREAS, Maudie Pennell, Custodian Worker II in Sandison Housing (retired), died on the sixteenth day of July two thousand and fifteen; and

WHEREAS, Maudie Pennell had given loyal and devoted service to Indiana State University for ten years and had gained the respect and affection of those who knew her as a co-worker and friend; and

THEREFORE, BE IT RESOLVED, that the Indiana State University Board of Trustees by this Resolution expresses to her family deep sympathy and condolence and further expresses gratitude and respect for the service which she gave to the University; and

BE IT FURTHER RESOLVED, that this Resolution be spread on the records of the minutes of the Indiana State University Board of Trustees, and that a copy thereof be duly executed and transmitted to her family.

### **IN MEMORIAM: Dr. Arthur Kline**

WHEREAS, Dr. Arthur Kline, Professor Emeritus of Sociology of Indiana State University, died on the seventeenth day of July two thousand and fifteen; and

WHEREAS, Dr. Arthur Kline had given loyal and devoted service to Indiana State University for nearly twenty eight years and had gained the respect of students and colleagues who knew him as a scholar, teacher and friend;

THEREFORE, BE IT RESOLVED, that the Indiana State University Board of Trustees by this Resolution expresses to his family deep sympathy and condolence and further expresses gratitude and respect for the dedicated service which he gave to the University; and

BE IT FURTHER RESOLVED, that this Resolution be spread on the records of the minutes of the Indiana State University Board of Trustees, and that a copy thereof be duly executed and transmitted to his family.

### **IN MEMORIAM: Anna Watkins**

WHEREAS, Anna Watkins, worked for Sycamore Dining (retired), died on the twenty second day of July two thousand and fifteen; and

WHEREAS, Anna Watkins had given loyal and devoted service to Indiana State University for twenty five years and had gained the respect and affection of those who knew her as a co-worker and friend; and

THEREFORE, BE IT RESOLVED, that the Indiana State University Board of Trustees by this Resolution expresses to her family deep sympathy and condolence and further expresses gratitude and respect for the service which she gave to the University; and

BE IT FURTHER RESOLVED, that this Resolution be spread on the records of the minutes of the Indiana State University Board of Trustees, and that a copy thereof be duly executed and transmitted to her family.

---

## **7 Old Business**

---

## **8 Adjournment**

Mr. Campbell adjourned the meeting at 3:36 p.m.